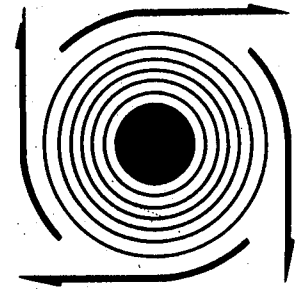


HONDA

GENERAL PURPOSE ENGINE

GXV610

GXV620



PARTS CATALOGUE

INDEX

FOREWORD INDEX

1

ENGINE GROUP

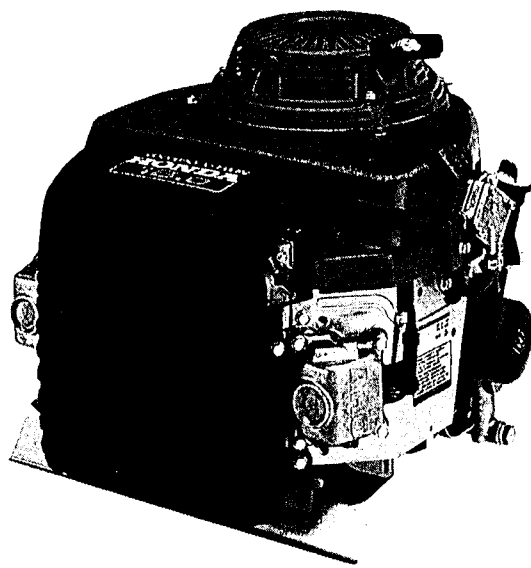
2

PART NUMBER INDEX

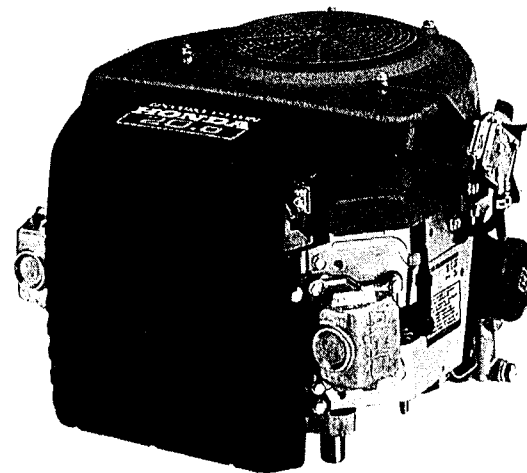
3

PART NAME INDEX

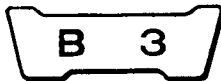
4



GXV610



GXV620



INSTRUCTION FOR USE OF PARTS CATALOGUE

This parts catalogue is compiled all service parts and flat rate time (F.R.T.) for models GXV610 and GXV620.

I. How to order parts

1. Information required

Replacement parts orders must contain both the **part number** and the **stamped number (s)** as described below. This is because any changes and modifications of parts are registered at HONDA with the pertinent parts and stamped numbers.

Numbers needed:

- (a) Carburetor parts: Part number and
Stamped carburetor identification number
- (b) Engine parts: Part number and
Stamped engine number

2. Revisions

When modifications or additions to this parts catalogue are made, a revised edition will be issued at an appropriate time, with successively progressing revision numbers on the cover.

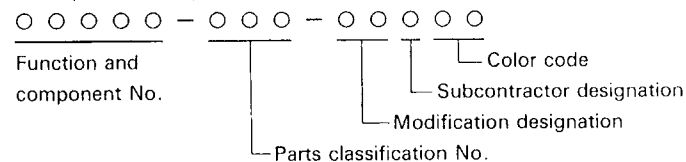
We recommend obtaining such revisions in order to keep your parts catalogue up-to-date at all times. To check whether a parts catalogue revision has been issued, please contact your HONDA distributor.

The asterisk (*) in front of "Ref. No." indicates that the part No. is added or changed against the previous edition.

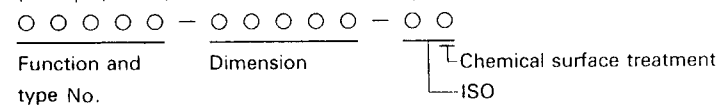
II. How to read this parts catalogue

1. Make-up of the part number

(Example) General parts



(Example) Bolts, nuts and other standard parts



2. Color codes

The color code at the end of the part number indicates the color. Codes below ZA in alphabetical order (such as ZA, ZB, ZC, etc.) do not indicate the color directly, but reference must be made to the HONDA code given in the "Description" column of this parts catalogue.

Color code	Color description
HONDA code	
NH1	Black
R8	Bright red

3. Abbreviations

The following abbreviations are used in this parts catalogue.

ASSY. Assembly	A.C. Alternating current
COMP. Complete	D.C. Direct current
R. Right	IN Inlet
L. Left	EX. Exhaust
STD. Standard	FR. Front
MM Millimeter	RR. Rear
T (22T) Tooth (22Teeth)	HEX. Hexagonal
A Ampere	P.T.O. Power take off
V Volt	C.D.I. Capacity discharge ignition
W Watt	H.S.T. Hydrostatic transmission
L (100L) Link (100Links)	



4. Dimensions

All dimensions are given in millimeters (mm) except in the case of steel balls, tires and tire tubes.

Parts	Example	Interpretation
Bolt (Screw)	6 × 12	6mm diameter, 12mm length
Pin	8 × 14	8mm diameter, 14mm length
O-Ring	9.5 × 1.6	9.5mm diameter, 1.6mm thickness
Oil seal	14 × 24 × 5	14mm inside diameter, 24mm outside diameter, 5mm thickness
Tube	5 × 130	5mm inside diameter, 130mm length

5. Supersedence of parts

Part numbers given under the part name in the "Description" column indicate that the part number has been superseded by that part number. HONDA may make such supersedence without notice.

6. Assemblies

Sections framed with broken lines in the exploded view drawings are available as complete assemblies. (Their individual parts can also be obtained.)

7. Required quantity

The number given in the "Reqd. No." column indicates the quantity of parts used in the section described in that block.

Parts with quantities in (), (represent optional parts.

"N" means order as needed.

8. Part modifications and applicable serial numbers

In cases where a part has been modified, the serial number of the first product (or engine, carburetor) bearing the modification is listed in the "Serial No." column.

9. Illustration

Illustration of parts given in parts catalogue diagrams are provided for convenience in identifying parts and may differ from the actual configuration of parts.

* (), (appended to the title number of this text means that the same title number continues from the previous page.

10. Models, types and applicable serial numbers

Models, types and applicable serial Nos. given in this parts catalogue can be identified as follows.

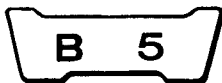
Parts with types are exclusive for models destined for those types.

If no types are listed, parts are for common use.

Model	Type	Applicable engine serial No.	Applicable carburetor identification No.
GXV610	QAE	GJAC-1000001~	BG25A <u>A</u>
	QAF		BG23A <u>A</u>
	QWA		
	QWA4		BG24A <u>A</u>
	QWC		
	QWD		
	QYF		
QYF4	BG23A <u>A</u>		
GXV620	QAE	GJAD-1000001~	BG28A <u>A</u>
	QAF		BG26A <u>A</u>
	QAF4		
	QWA		BG27A <u>A</u>
	QWC		
	QWD		
	QYF		BG26A <u>A</u>
QYF4			

* Of carburetor identification numbers, only the portions underlined in the example below are used for registration.

BG23A A NG ナ

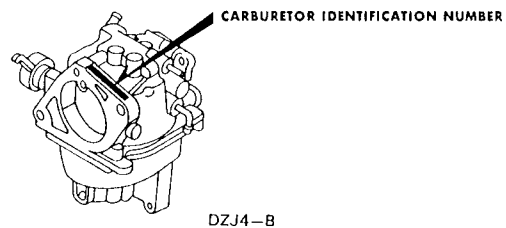
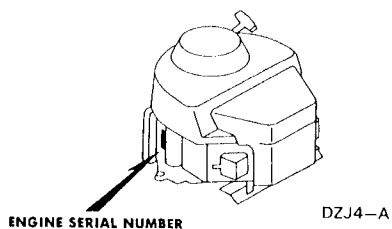


11. Location of stamped serial number

Engine type stamping

The engine number and type are stamped together.

Offer the model name, engine number and type when ordering the replacement parts.



12. The characteristics of respective base types are as follows.

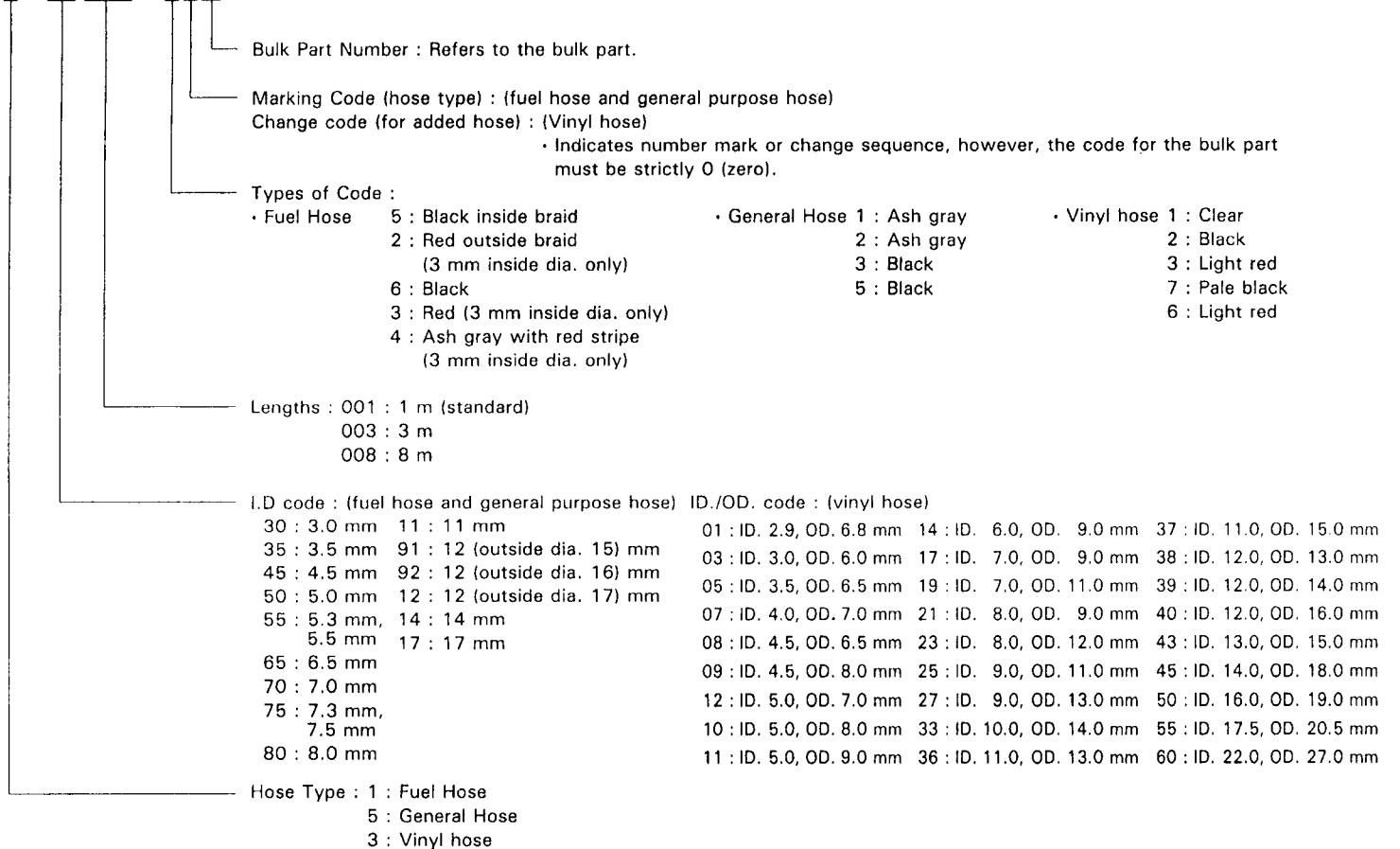
Specifications		Model	GXV610							GXV620							
		Type	QAE	QAF	QWA	QWA4	QWC	QWD	QYF	QYF4	QAE	QAF	QAF4	QWA	QWC	QWD	QYF
Starter motor			●	●	●	●	●		●	●	●	●	●	●		●	●
Charge coil	12V / 3A		●		●	●	●				●			●	●		
	12V / 20A			●					●	●		●				●	●

13. Fuel Hose, General Purpose Hoses and Vinyl Hose

- The standard part fuel hose, general purpose hose and vinyl hose may be substituted by the coiled bulk part.
- When ordering the standard part fuel hose, general purpose hose and vinyl hose use the bulk part number written in the parts catalog in brackets () underneath the part name.
- When exchanging the hose, cut and use at the specified length as mentioned in the part name.
(For the method of cutting the bulk part, and method of filling out orders etc., please refer to the instructions issued with the bulk part.)

Bulk part number of fuel hose, general purpose hose and vinyl hose.

Example: 9 5 0 0 1 - 7 5 0 0 1 - 5 0 M



© **CAUTION:** It is **DANGEROUS** to confuse the fuel hose with the general purpose hose or vinyl hose.

Never use a general purpose hose or vinyl hose in place of a fuel hose or vice versa. Always use the correct bulk part in the parts list, according to the service manual or the instructions issued with the bulk part.



III. How to use the flat rate time (F.R.T.)

This F.R.T. (Flat Rate Time) is used to determine the standard labor time allowed for replacement of parts covered by the warranty during the period the warranty is in effect. The F.R.T. for those parts which are not listed herein should be determined from the operation closely related to the replacement of that part.

1. The F.R.T. is based on the following servicing conditions

- A liberal allowance is added to the net servicing time.
- Standard times specified are based on the condition that the necessary servicing tools listed in the service manual which describes the HONDA service policy are available close at hand and the work performed by a mechanic with normal skill.
- Time required for inspection and operational test following the servicing is included in the F.R.T.
- The F.R.T. for "●" marked parts are same as the F.R.T. for the representative part above.
- The F.R.T. shown with (*) includes engine removal and installation.

2. Method of computing

The job times are listed in tenth of an hour to simplify computation.

- (Example) 0.3 = 18 minutes
 5.6 = 5 hours and 36 minutes

CONVERSION CHART			
Hours	Minutes	Hours	Minutes
0.1	6	0.6	36
0.2	12	0.7	42
0.3	18	0.8	48
0.4	24	0.9	54
0.5	30	1.0	60

3. Computing the F.R.T.

When several jobs are performed at the same time, make the calculation in the following manner.

Parts and their F.R.T. described below are the sample and have no relation to the text.

a. Jobs of non duplicated nature

The F.R.T. for the job is obtained by totalling the F.R.T. for each part replaced.

(Example) Replacement of cylinder head gasket and carburetor.

Service item	F.R.T.
CYLINDER HEAD GASKET	0.3
CARBURETOR	0.4

The F.R.T. for the job is: $0.3 + 0.4 = 0.7$

b. Jobs of duplicated nature

Take the F.R.T. for the last part to be replaced.

(Example) Replacement of piston and cylinder head gasket.

Service item	F.R.T.
CYLINDER HEAD GASKET	0.3
PISTON	* 1.4

The F.R.T. for the job is: 1.4

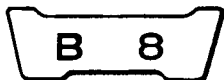
c. Jobs of partially related nature

Total up the F.R.T. for all of the parts replaced and then subtract the F.R.T. for the duplicated operation.

(Example) Replacement of valve, piston and cylinder head.

Service item	F.R.T.
VALVE	0.5
PISTON	* 1.4
CYLINDER HEAD	0.3

The F.R.T. for the job is: $(0.5 + 1.4) - 0.3 = 1.6$
 Cylinder head is the duplicated operations.



4. Adjustment and cleaning

Item	Service item	F. R. T.
Adjustment	Tappets	0.2
	Carburetor	0.4
	Governor	0.2
Cleaning	Carburetor	0.7
	Air cleaner	0.2
	Spark plug	0.1

● This parts catalogue is compiled as of February 10, 1995.

August 1, 1993
HONDA MOTOR CO., LTD.

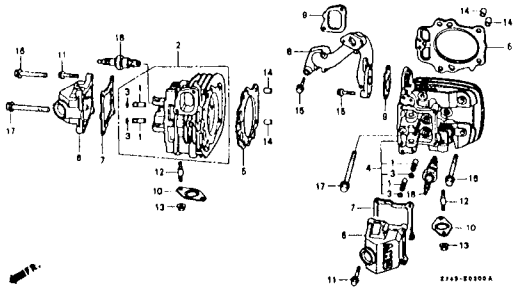
B 9**ENGINE GROUP**

[E]

•Ref.No.on the index illustration may be different from that in the text.

C 1**Cylinder head**

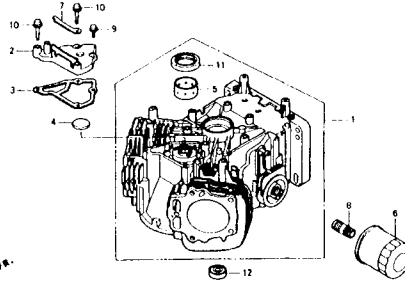
E-2



2143-0000A

C 2**Cylinder barrel**

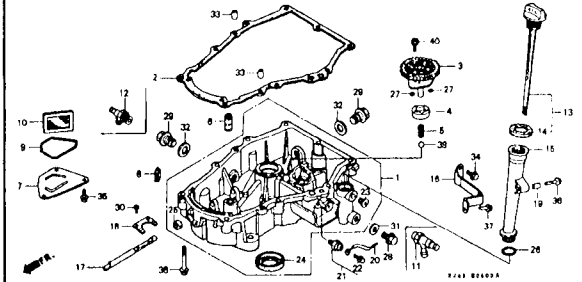
E-3



2143-0000

C 3**Oil pan**

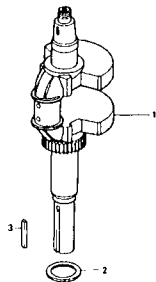
E-6



2143-0000A

C 5**Crankshaft**

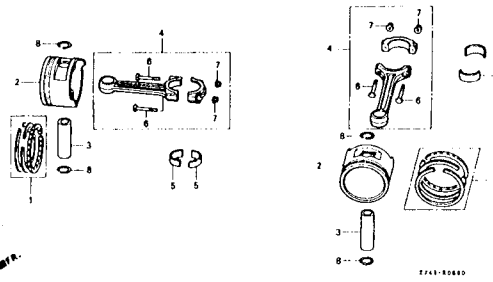
E-7



2143-00100 A

C 6**Piston**

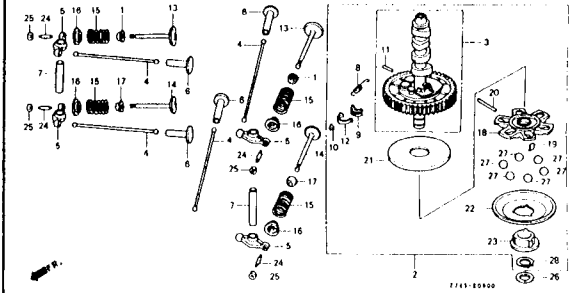
E-8



2143-00000

C 7**Camshaft**

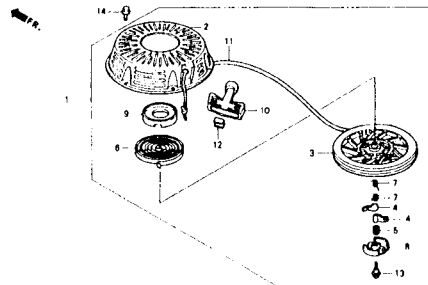
E-9



2143-00000

C 9**Recoil starter**

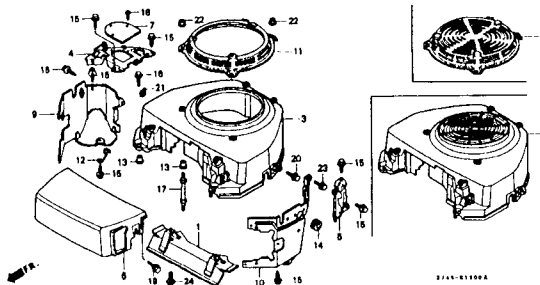
E-11



2143-01100

C 10**Fan cover**

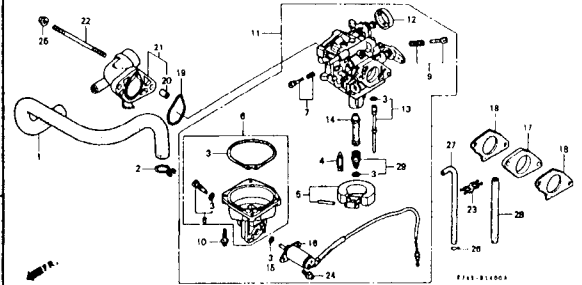
E-12



2143-01000A

C 12**Carburetor**

E-14



2143-01400A

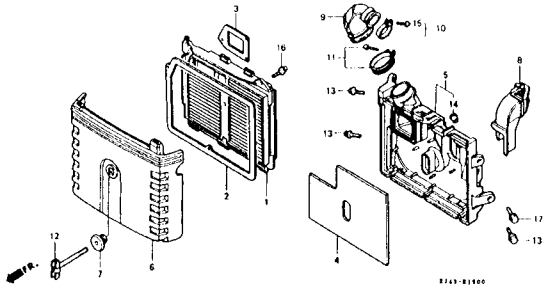
B 10**ENGINE GROUP**

[E]

•Ref.No.on the Index illustration may be different from that in the text.

C 14**Air cleaner**

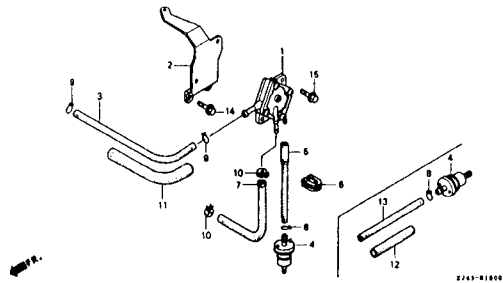
E-15



E743-81800

C 15**Fuel pump**

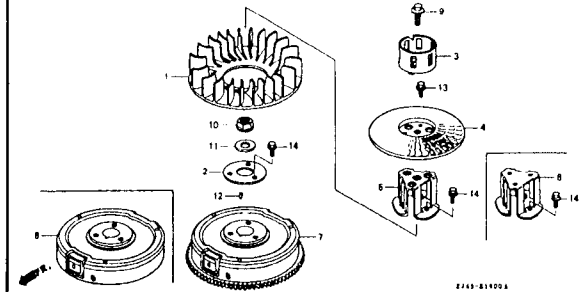
E-18



E743-81800 A

C 16**Flywheel**

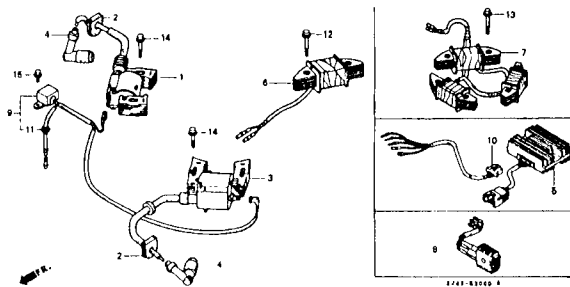
E-19



E743-81800 A

D 1**Ignition coil**

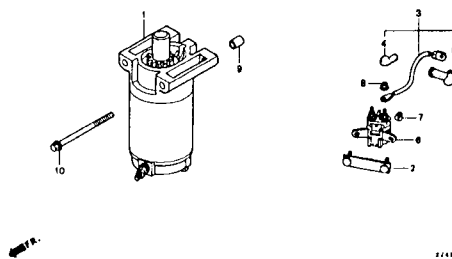
E-20



E743-83300 A

D 2**Starter motor**

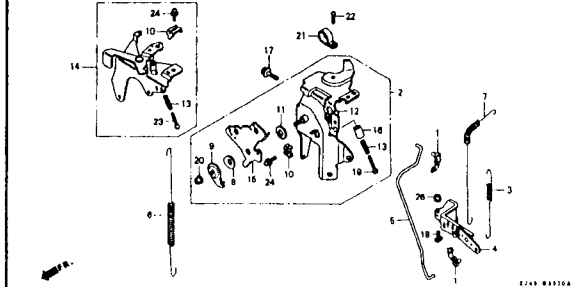
E-21



E743-83100 A

D 3**Control**

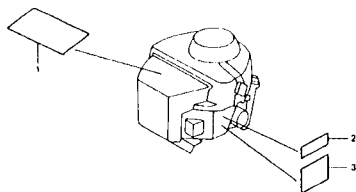
E-22



E743-83350 A

D 5**Labels**

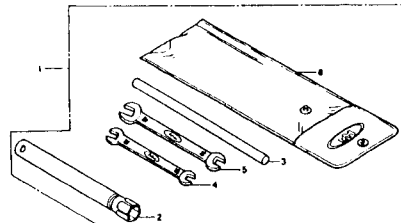
E-28



E743-83300

D 6**Tools**

E-29



E743-83300

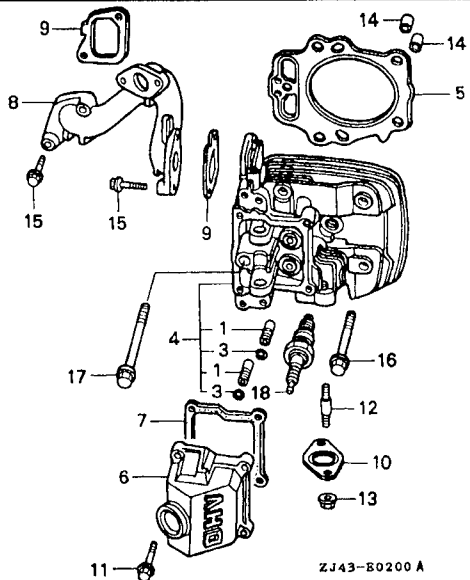
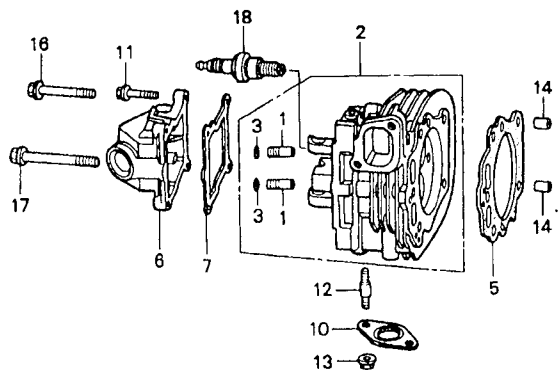
D 7**Gasket kit**

EOP-1

C 1

Cylinder head

E - 2



ZJ43-B0200 A



Service Item F.R.T.

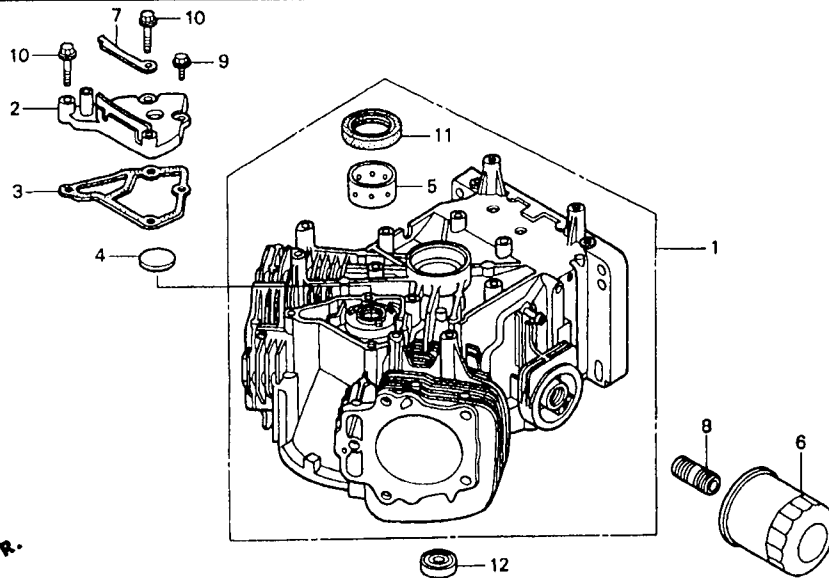
HEAD COMP., CYLINDER.....	1.6
(ADD 0.8 FOR EACH.)	
.HEAD COMP., CYLINDER	
GASKET, CYLINDER HEAD.....	1.2
COVER, HEAD.....	0.2
.PACKING, HEAD COVER	
MANIFOLD, IN.....	0.5
.GASKET, IN. MANIFOLD	
GASKET, EX. PIPE.....	0.3
PLUG, SPARK.....	0.1

Ref. No.	Part No.	Description	Reqd. No.		Serial No.	Type
			GXV 610	GXV 620		
1	12205-ZE2-305	GUIDE, EX. VALVE (OVER SIZE)..	4	4		
2	12210-ZJ4-000	HEAD COMP., CYLINDER (#1)....	1	1		
3	12216-ZE2-300	CLIP, VALVE GUIDE.....	4	4		
4	12220-ZJ4-000	HEAD COMP., CYLINDER (#2)....	1	1		
5	12251-ZJ1-003	GASKET, CYLINDER HEAD.....	2	2		
6	12311-ZJ1-000	COVER, HEAD.....	2	2		
7	12391-ZJ1-000	PACKING, HEAD COVER.....	2	2		
8	17101-ZJ4-000	MANIFOLD, IN.....	1	1		
9	17151-ZJ1-003	GASKET, IN. MANIFOLD.....	2	2		
10	18333-ZJ1-000	GASKET, EX. PIPE.....	2	2		
11	90121-ZJ1-000	BOLT, FLANGE, 6X25 (CT200)....	8	8		
12	92900-08025-0B	BOLT 2, STUD, 8X25.....	4	4		
* 13	94050-08000	NUT, FLANGE, 8MM.....	4	4		
14	94301-12200	PIN, DOWEL, 12X20.....	4	4		
15	95701-06032-00	BOLT, FLANGE, 6X32.....	4	4		
16	95701-10075-00	BOLT, FLANGE, 10X75.....	8	8		
17	95701-10130-00	BOLT, FLANGE, 10X130.....	2	2		
18	98079-55846	PLUG, SPARK (BPR5ES NGK).....	2	2		

C 2

Cylinder barrel

E - 3



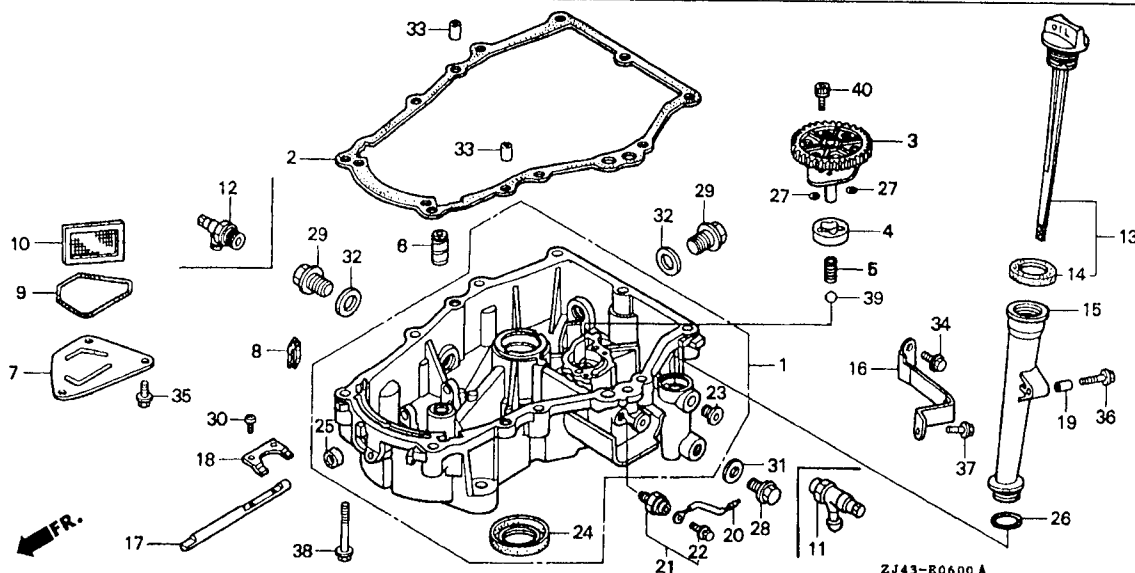
Service Item	F.R.T.
BARREL ASSY., CYLINDER.....	4.0
COVER, BREATHER.....	0.9
.PACKING, BREATHER COVER	
CARTRIDGE, OIL FILTER.....	0.2
OIL SEAL, 38X58X11.....	3.5
BEARING, RADIAL BALL, 6003.....	2.0

Ref. No.	Part No.	Description	Reqd. No.		Serial No.	Type
			GXV 610	GXV 620		
1	120A0-ZJ1-000	BARREL ASSY., CYLINDER.....	1	1	-----	QAE,QAF,QWA,QYF
	120A0-ZJ1-820	BARREL ASSY., CYLINDER (W/O-PUMP)	1	1	-----	QWC,QWD
*	12000-ZJ4-000	BARREL ASSY., CYLINDER.....	1	1	-----	QAF4,QWA4,QYF4
2	12356-ZJ1-000	COVER, BREATHER.....	1	1		
3	12358-ZJ1-000	PACKING, BREATHER COVER.....	1	1		
4	12372-ZE2-300	VALVE, BREATHER.....	1	1		
*	13321-ZJ1-000	BEARING A, MAIN (BLUE).....	(1)	(1)		
*	13322-ZJ1-000	BEARING B, MAIN (BLACK).....	(1)	(1)		
*	13323-ZJ1-000	BEARING C, MAIN (BROWN).....	(1)	(1)		
6	15400-PR3-004	CARTRIDGE, OIL FILTER (TOYO ROKI)	1	1		
7	31511-ZJ1-000	CLAMPER, CORD.....	1	1		
8	90018-PN3-000	HOLDER, OIL FILTER.....	1	1		
9	90029-888-000	BOLT, FLANGE, 6X16.....	2	2		
10	90031-ZE1-000	BOLT, FLANGE, 6X32.....	2	2		
11	91201-ZJ1-003	OIL SEAL, 38X58X11.....	1	1		
12	96140-60030-10	BEARING, RADIAL BALL, 6003....	1	1		

C 3

Oil pan

E - 6



Service Item	F.R.T.
PAN ASSY., OIL.....	1.5
PACKING, CASE COVER.....	0.9
.SHAFT, OIL CONTROL	
.RUBBER, OIL RETURN	
COVER ASSY., OIL PUMP.....	1.0
.ROTOR, OIL PUMP OUTER	
.SCREEN, OIL FILTER	
.SHAFT, GOVERNOR ARM	
.OIL SEAL, 38X58X11	
.OIL SEAL, 10X20X5	
VALVE, OIL SHUT-OFF.....	0.1
.EXTENSION, OIL FILLER	
.O-RING, 22.5X2.2	
SWITCH, OIL PRESSURE.....	0.2
.WASHER, DRAIN PLUG, 20MM	
O-RING, 13X3.0.....	0.7

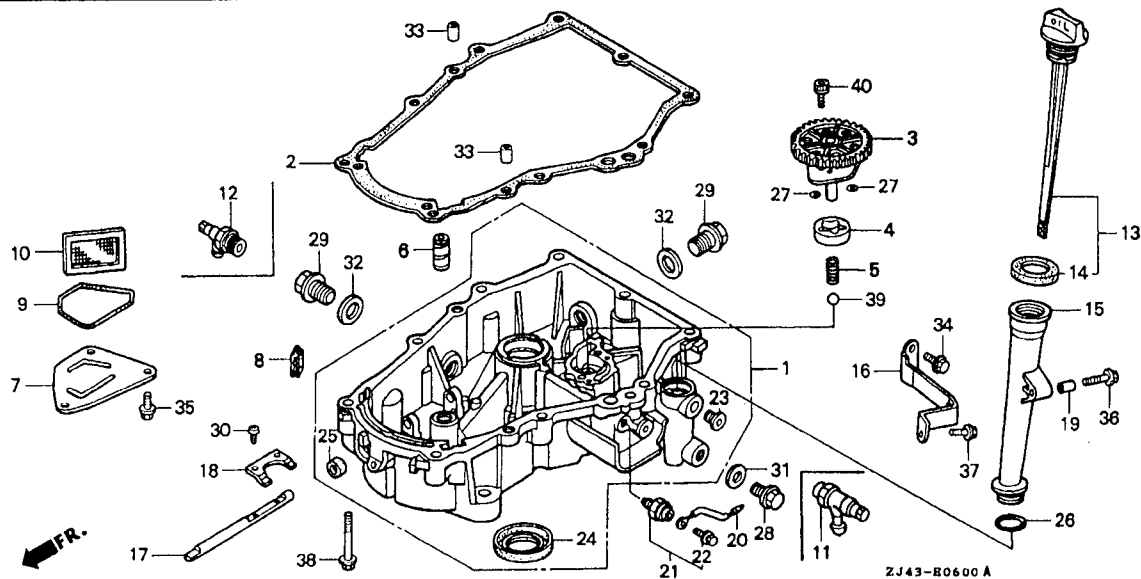
Ref. No.	Part No.	Description	Reqd. No.		Serial No.	Type
			6XV	620		
	1	11300-ZJ4-000		1		
	2	11381-ZJ1-000		1		
	3	15120-ZJ1-000		1		
	4	15124-ZJ1-003		1		
	5	15232-ZJ1-000		1		
	6	15235-ZJ4-000		1		
	7	15334-ZJ4-000		1		
	8	15335-ZE7-000		2		
	9	15339-ZJ4-000		1		
	10	15427-ZG8-000		1		
*	11	15558-ZJ1-003	(1)	(1)		
*	12	15558-772-010	(1)	(1)		
	13	15600-ZJ4-000		1		
	14	15625-ZE8-000		1		
	15	15630-ZE8-000		1		
	16	15646-ZJ4-000		1		
	17	16541-ZJ1-000		1		
	18	16542-ZJ1-000		1		
	19	17240-ZE6-000		1		
	20	37201-ZJ4-000		1		----- QAE,QAF,QAF4,QWA,QWA4,QWC,QYF,QYF4
	21	37240-ZG3-E01		1		----- QAE,QAF,QAF4,QWA,QWA4,QWC,QYF,QYF4
	22	90002-ZG5-004		1		----- QAE,QAF,QAF4,QWA,QWA4,QWC,QYF,QYF4
	23	90855-921-300		1		
	24	91201-ZJ1-003		1		
	25	91202-HC0-003		1		



C 4

Oil pan

E - 6



Service Item F.R.T.

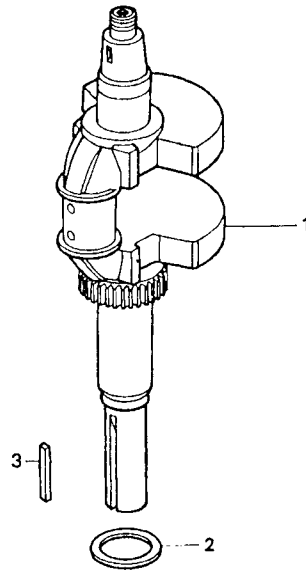
Ref. No.	Part No.	Description	Reqd. No.		Serial No.	Type
			610	620		
26	91301-ZE9-003	O-RING, 22.5X2.2.....	1	1		
27	91302-MB6-830	O-RING, 13X3.0.....	2	2		
28	92800-14000	BOLT, DRAIN PLUG, 14MM.....	1	1		
29	92800-20000	BOLT, DRAIN PLUG, 20MM.....	2	2		
30	93500-05010-0A	SCREW, PAN, 5X10.....	2	2		
31	94109-14000	WASHER, DRAIN PLUG, 14MM.....	1	1		
32	94109-20000	WASHER, DRAIN PLUG, 20MM.....	2	2		
33	94301-08140	PIN, DOWEL, 8X14.....	2	2		
34	95701-06012-00	BOLT, FLANGE, 6X12.....	1	1		
35	95701-06014-00	BOLT, FLANGE, 6X14.....	3	3		
36	95701-06028-00	BOLT, FLANGE, 6X28.....	1	1		
37	95701-08016-00	BOLT, FLANGE, 8X16.....	1	1		
38	95701-08050-00	BOLT, FLANGE, 8X50.....	9	9		
39	96211-12000	BALL, STEEL, #12 (3/8).....	1	1		
40	96600-06016-00	BOLT, SOCKET, 6X16.....	2	2		

C 5

Crankshaft

E - 7

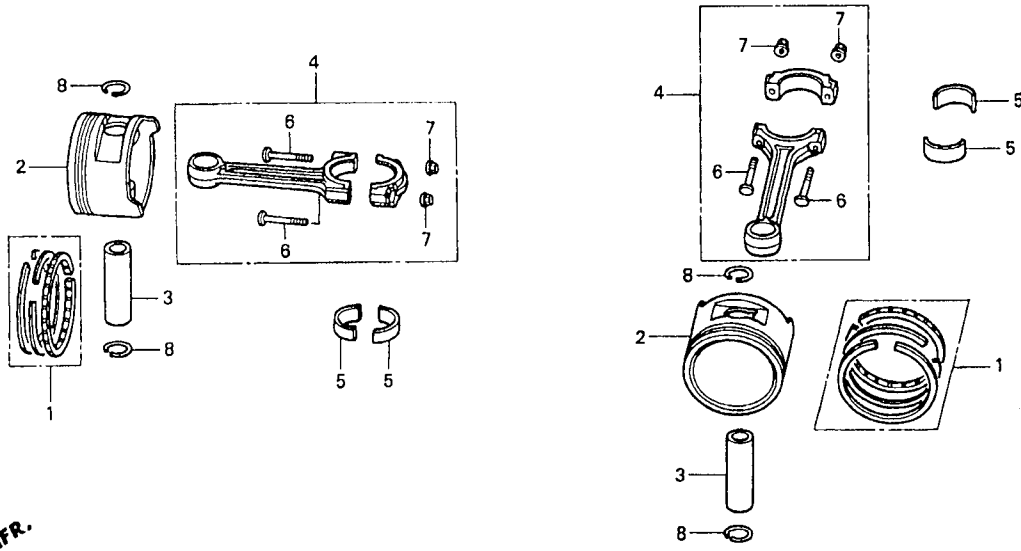
Service	Item	F.R.T.
	CRANKSHAFT COMP.....	3.4



ZJ49-B0700 A

ZJ49B0700

Ref. No.	Part No.	Description	Reqd. No.		Serial No.	Type
			GXV 610	GXV 620		
1	13310-ZJ4-000	CRANKSHAFT COMP.....	1	1		
2	90401-ZJ1-000	WASHER, CRANKSHAFT THRUST.....	1	1		
3	90745-ZE2-600	KEY, 6.3X6.3X43.....	(1)	(1)		



Service Item	F.R.T.
RING SET, PISTON.....	3.4
(ADD 0.2 FOR EACH.)	
PISTON.....	3.6
(ADD 0.2 FOR EACH.)	
.ROD SET, CONNECTING	
(ADD 0.2 FOR EACH.)	

← IFR.

Ref. No.	Part No.	Description	Reqd. No.		Serial No.	Type
			GXV 610	GXV 620		
1	13010-ZE8-601	RING SET, PISTON (STD.).....	2	2		
	13010-ZE8-602	2	2		
	13011-ZE8-601	RING SET, PISTON (0.25).....	2	2		
	13011-ZE8-602	2	2		
	13012-ZE8-601	RING SET, PISTON (0.50).....	(2)	(2)		
	13012-ZE8-602	(2)	(2)		
	13013-ZE8-601	RING SET, PISTON (0.75).....	(2)	(2)		
	13013-ZE8-602	(2)	(2)		
2	13101-ZJ1-000	PISTON (STD.).....	2	2		
	13102-ZJ1-000	PISTON (0.25).....	(2)	(2)		
	13103-ZJ1-000	PISTON (0.50).....	(2)	(2)		
	13104-ZJ1-000	PISTON (0.75).....	(2)	(2)		
3	13111-ZJ1-000	PIN, PISTON.....	2	2		
4	13210-ZJ1-000	ROD SET, CONNECTING.....	2	2		
5	13211-ZJ1-003	BEARING A, CONNECTING ROD.....	4	4		
	13212-ZJ1-003	BEARING B, CONNECTING ROD.....	4	4		
	13213-ZJ1-003	BEARING C, CONNECTING ROD.....	4	4		
	13214-ZJ1-003	BEARING D, CONNECTING ROD.....	4	4		
	13215-ZJ1-003	BEARING E, CONNECTING ROD.....	4	4		
	13216-ZJ1-003	BEARING F, CONNECTING ROD.....	4	4		
	13217-ZJ1-003	BEARING G, CONNECTING ROD.....	4	4		
6	13213-ML0-000	BOLT, CONNECTING ROD.....	4	4		
7	13215-KM3-000	NUT, CONNECTING ROD.....	4	4		
8	94601-18000	CLIP, PISTON PIN, 18MM.....	4	4		

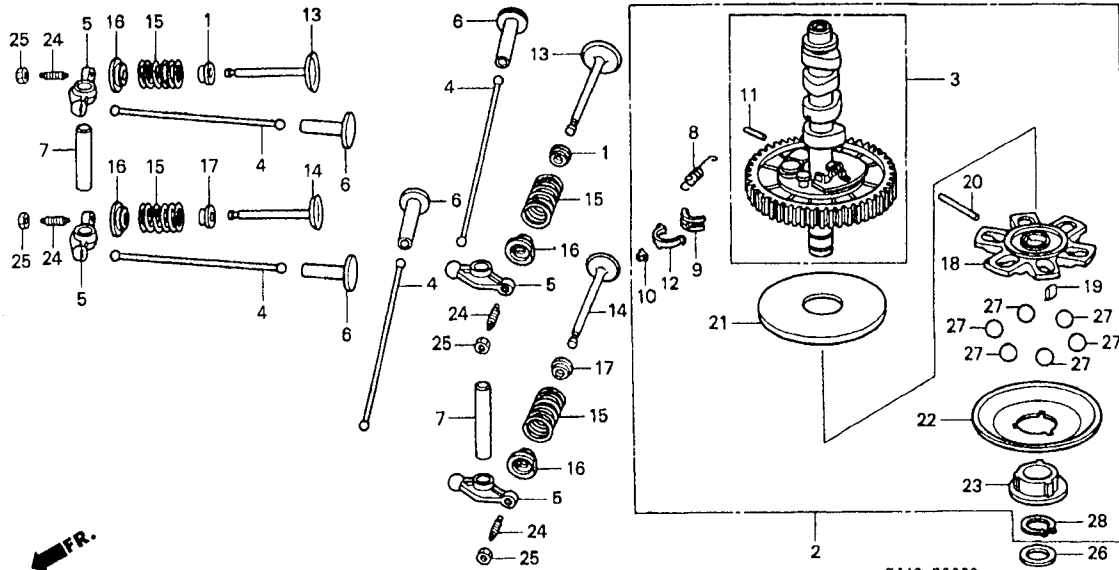
Connecting rod bearing selection (Oil clearance 20~38μm)

Crankpin O.D. 40φ		Connecting rod I.D. 43φ			
		A	B	C	D
0	0	G	F	E	D
	-0.006	Red	Pink	Yellow	Green
1	+0.006	F	E	D	C
	+0.006	Pink	Yellow	Green	Brown
2	+0.012	E	D	C	B
	+0.012	Yellow	Green	Brown	Black
3	+0.018	D	C	B	A
	+0.018	Green	Brown	Black	Blue
4	+0.024				
	+0.024				

C 7

Camshaft

E - 9



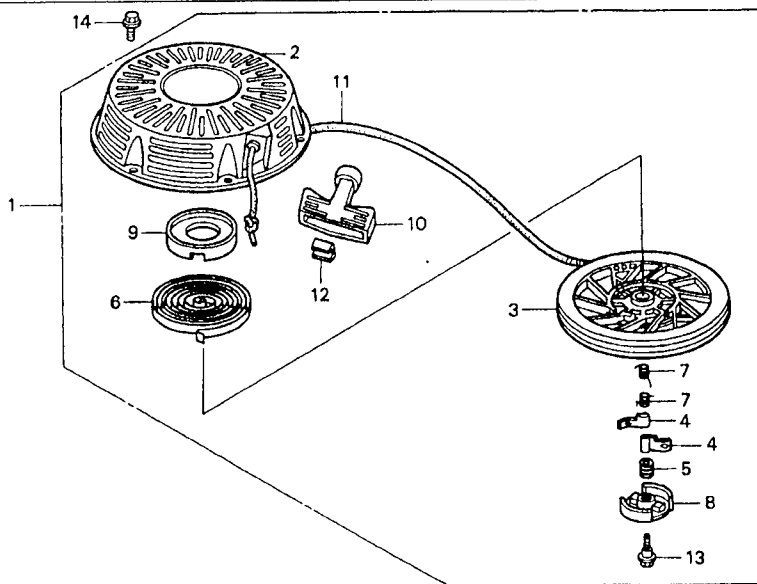
Service Item	F.R.T.
CAMSHAFT ASSY.....	1.2
.LIFTER, VALVE	
CAMSHAFT COMP.....	1.3
.VALVE, IN. (ADD 0.1 FOR EACH.)	
.HOLDER, GOVERNOR WEIGHT (INC. RELATIVE PART)	
ROD, PUSH.....	0.3
.ARM, VALVE ROCKER (ADD 0.1 FOR EACH.)	
.SHAFT, ROCKER ARM	
.SPRING, VALVE (ADD 0.1 FOR EACH.)	

Ref. No.	Part No.	Description	Reqd. No.		Serial No.	Type
			GXV 610	GXV 620		
1	12209-ZE8-003	SEAL, VALVE STEM.....	2	2		
2	14100-ZJ1-801	CAMSHAFT ASSY.....	1	1		
3	14110-ZJ1-801	CAMSHAFT COMP.....	1	1		
4	14410-ZJ1-000	ROD, PUSH.....	4	4		
5	14431-ZJ1-000	ARM, VALVE ROCKER.....	4	4		
6	14441-ZE2-000	LIFTER, VALVE.....	4	4		
7	14461-ZJ4-000	SHAFT, ROCKER ARM.....	2	2		
8	14568-ZJ1-800	SPRING, WEIGHT RETURN.....	1	1		
9	14569-ZJ1-801	HOLDER, DECOMPER PIN.....	2	2		
10	14576-ZJ1-800	PIN A, DECOMPER (7.85).....	2	2	-----	QAE, QAF, QWA, QWC, QWD, QYF
	14577-ZJ1-800	PIN B, DECOMPER (7.95).....	2	2	-----	QAE, QAF, QWA, QWC, QWD, QYF
	14578-ZJ1-800	PIN C, DECOMPER (8.05).....	2	2	-----	QAE, QAF, QWA, QWC, QWD, QYF
	14579-ZJ1-800	PIN D, DECOMPER (8.15).....	2	2	-----	QAE, QAF, QWA, QWC, QWD, QYF
	14580-ZJ1-800	PIN E, DECOMPER (8.25).....	2	2	-----	QAE, QAF, QWA, QWC, QWD, QYF
*	14576-ZJ1-801	PIN A, DECOMPER (7.85).....	2	2	-----	QAF4, QWA4, QYF4
*	14577-ZJ1-801	PIN B, DECOMPER (7.95).....	2	2	-----	QAF4, QWA4, QYF4
*	14578-ZJ1-801	PIN C, DECOMPER (8.05).....	2	2	-----	QAF4, QWA4, QYF4
*	14579-ZJ1-801	PIN D, DECOMPER (8.15).....	2	2	-----	QAF4, QWA4, QYF4
*	14580-ZJ1-801	PIN E, DECOMPER (8.25).....	2	2	-----	QAF4, QWA4, QYF4
11	14581-ZJ1-801	ROD, DECOMPER.....	1	1		
12	14586-ZJ1-800	SPRING, DECOMPER PIN HOLDER...	2	2		
13	14711-ZJ1-000	VALVE, IN.....	2	2		
14	14721-ZJ1-000	VALVE, EX.....	2	2		
15	14751-ZE2-003	SPRING, VALVE.....	4	4		
16	14771-ZE2-000	RETAINER, IN. VALVE SPRING....	4	4		
17	14775-ZE2-010	SEAT, VALVE SPRING.....	2	2		

C 9

Recoil starter

E-11



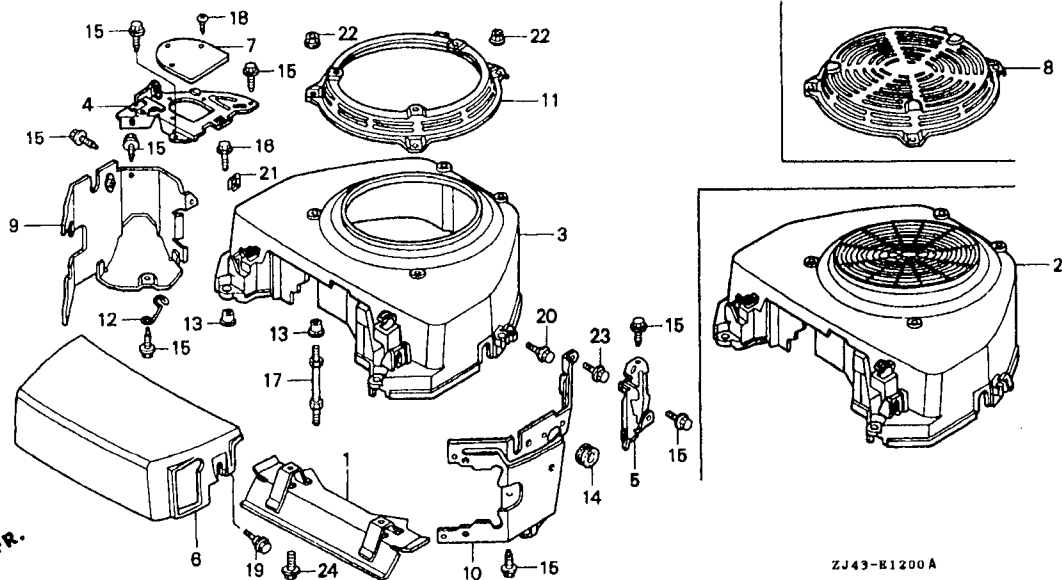
ZJ43-E1100

ZJ43E1100

Service Item	F.R.T.
STARTER ASSY., RECOIL.....	0.1
.GRIP, STARTER	
PULLEY, RECOIL STARTER.....	0.4
.SPRING, STARTER RETURN	
.ROPE, RECOIL STARTER	
RATCHET, STARTER.....	0.2

Ref. No.	Part No.	Description	Reqd. No.		Serial No.	Type
			6XV	620		
1	28400-ZE3-W01ZA	STARTER ASSY., RECOIL	1	1	-----	QWA, QWA4, QWC, QWD
		R8.....BRIGHT RED	1	1	-----	QWA, QWA4, QWC, QWD
	28400-ZE3-W01ZB	*NH1*.....BLACK	1	1	-----	QWA, QWA4, QWC, QWD
2	28410-ZE3-W01ZA	CASE COMP., RECOIL STARTER	1	1	-----	QWA, QWA4, QWC, QWD
		R8.....BRIGHT RED	1	1	-----	QWA, QWA4, QWC, QWD
	28410-ZE3-W01ZB	*NH1*.....BLACK	1	1	-----	QWA, QWA4, QWC, QWD
3	28421-ZE3-W01	PULLEY, RECOIL STARTER.....	1	1	-----	QWA, QWA4, QWC, QWD
4	28422-ZE2-W01	RATCHET, STARTER.....	2	2	-----	QWA, QWA4, QWC, QWD
5	28441-ZE2-W01	SPRING, FRICTION.....	1	1	-----	QWA, QWA4, QWC, QWD
6	28442-ZE2-W01	SPRING, STARTER RETURN.....	1	1	-----	QWA, QWA4, QWC, QWD
7	28443-ZE2-W01	SPRING, RATCHET.....	2	2	-----	QWA, QWA4, QWC, QWD
8	28444-ZE2-W01	RETAINER, SPRING.....	1	1	-----	QWA, QWA4, QWC, QWD
9	28445-ZE2-W01	HOLDER, SPRING.....	1	1	-----	QWA, QWA4, QWC, QWD
10	28461-ZE2-W01	GRIP, STARTER.....	1	1	-----	QWA, QWA4, QWC, QWD
11	28462-ZE3-W01	ROPE, RECOIL STARTER.....	1	1	-----	QWA, QWA4, QWC, QWD
12	28469-ZE2-W01	GRIP, REINFORCEMENT.....	1	1	-----	QWA, QWA4, QWC, QWD
13	90004-ZE2-W01	SCREW, CENTER.....	1	1	-----	QWA, QWA4, QWC, QWD
14	95701-06008-00	BOLT, FLANGE, 6X8.....	3	3	-----	QWA, QWA4, QWC, QWD





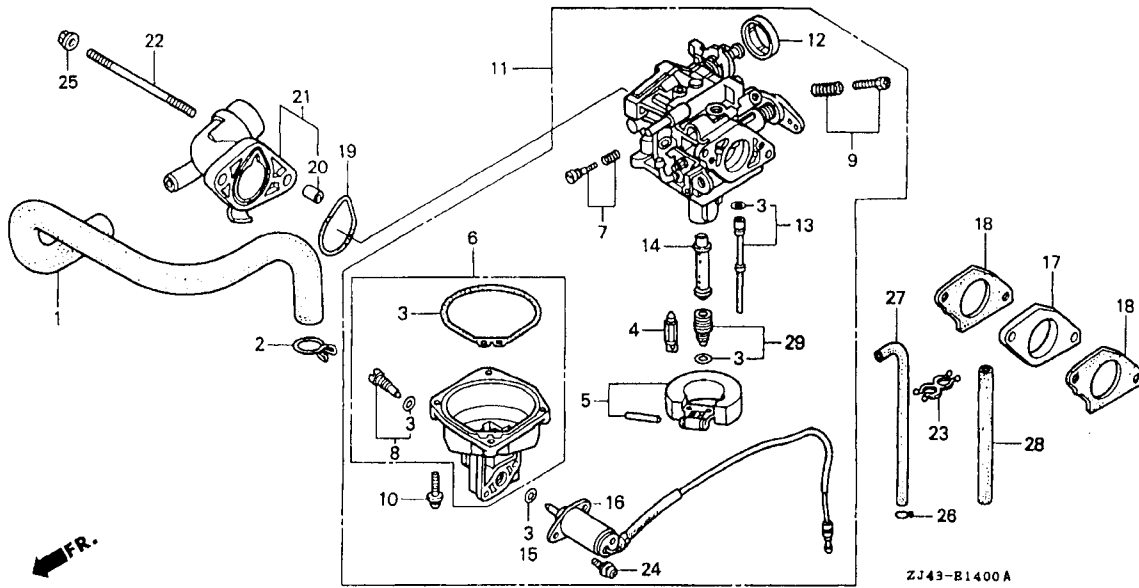
Service Item	F.R.T.
PROTECTOR COMP., EX. PIPE.....	0.2
COVER, FAN.....	0.4
.PLATE, L. SIDE	
PLATE, R. SIDE.....	0.8
HOOD, FAN COVER.....	0.1
.PROTECTOR, FAN COVER	
.SPACER, RECOIL STARTER	
MOUNTING	
SHROUD, R.....	0.7
.SHROUD, L.	

ZJ43-E1200A

Ref. No.	Part No.	Description	Reqd. No.		Serial No.	Type
			GXV 610	GXV 620		
* 1	18205-ZJ4-000	PROTECTOR COMP., EX. PIPE.....	(1)	(1)	1000016	----- QAE,QAF,QYF
			1	(1)	-----	QAF4,QWA4
			1	1	1000016	----- QWA,QWC,QWD
			(1)	(1)	-----	QYF4
2	19611-ZJ1-000ZB	COVER, FAN				
		R8.....BRIGHT RED	1	1	-----	QAE,QAF,QAF4
		NH1.....BLACK	1	1	-----	QAE,QAF,QAF4
3	19611-ZJ1-800ZB	COVER, FAN (RECOIL STARTER)				
		R8.....BRIGHT RED	1	1	-----	QWA,QWA4,QWC,QWD,QYF,QYF4
		NH1.....BLACK	1	1	-----	QWA,QWA4,QWC,QWD,QYF,QYF4
4	19612-ZJ1-000	PLATE, R. SIDE.....	1	1		
5	19614-ZJ1-000	PLATE, L. SIDE.....	1	1		
6	19615-ZJ1-000	HOOD, FAN COVER.....	1	1		
7	19617-ZJ4-000	COVER, R. SIDE PLATE.....	1	1	-----	QWD
8	19621-ZJ1-801ZA	PROTECTOR, FAN COVER				
		NH1.....BLACK	1	1	-----	QYF,QYF4
		R8.....BRIGHT RED	1	1	-----	QYF,QYF4
9	19631-ZJ1-000	SHROUD, R.....	1	1		
10	19632-ZJ4-000	SHROUD, L.....	1	1		
11	28405-ZJ1-801ZA	SPACER, RECOIL STARTER				
		MOUNTING				
		NH1.....BLACK	1	1	-----	QWA,QWA4,QWC,QWD
		R8.....BRIGHT RED	1	1	-----	QWA,QWA4,QWC,QWD
12	30588-898-000	CLAMP, HIGH TENSION TUBE.....	1	1		
13	33713-GC2-000	COLLAR B, TAILLIGHT.....	6	6		
14	80115-KS5-000	RUBBER, BRACKET MOUNTING.....	1	1		
15	90013-883-000	BOLT, FLANGE, 6X12.....	8	8		

2

Ref. No.	Part No.	Description	Reqd. No.		Serial No.	Type
			GXV #10	GXV #20		
16	90018-ZE1-000	BOLT, FLANGE, 6X23.....	2	2		
17	90042-ZJ1-000	BOLT, STUD, 6X75.....	4	4		
18	90055-ZE1-000	SCREW, TAPPING, 4X6.....	3	3	-----	QWD
19	90104-GF6-000	BOLT, FLANGE, 6X20.....	2	2		
20	90113-GE4-000	BOLT, FLANGE, 6MM (BLACK).....	2	2		
21	90320-MM5-000	NUT, SPRING, 6MM.....	2	2		
22	94050-06000	NUT, FLANGE, 6MM.....	4	4		
23	95701-06008-00	BOLT, FLANGE, 6X8.....	2	2		
* 24	95701-08016-00	BOLT, FLANGE, 8X16.....	(2)	(2)	1000016	----- QAE, QAF, QYF
			2	(2)	-----	QAF4, QWA4
			2	2	1000016	----- QWA, QWC, QWD
			(2)	(2)	-----	QYF4



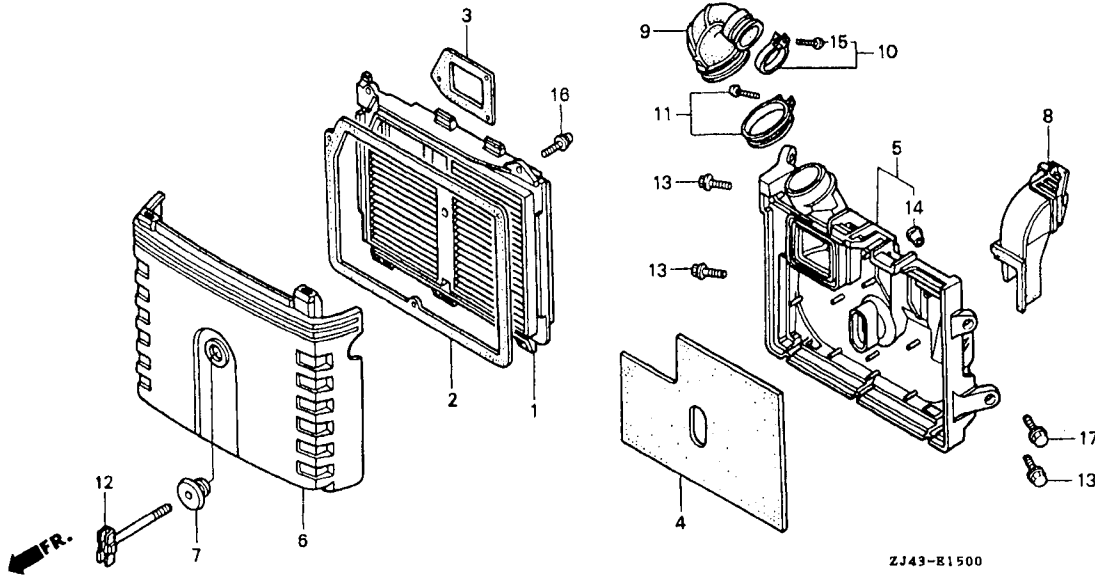
Service Item	F.R.T.
TUBE, BREATHER.....	0.3
GASKET SET.....	0.8
VALVE SET, FLOAT.....	0.7
. FLOAT SET	
. CHAMBER SET, FLOAT	
. CHAMBER SET, FLOAT	
. JET SET, MAIN,	
CARBURETOR ASSY.....	0.6
VALVE ASSY., SOLENOID.....	0.5
INSULATOR, CARBURETOR.....	0.4
. PACKING, CARBURETOR	
PACKING, AIR CLEANER.....	0.2
. ELBOW COMP., AIR CLEANER	
TUBE, 4.5X450.....	0.1

2

Ref. No.	Part No.	Description	Reqd. No.		Serial No.	Type
			GXV 610	GXV 620		
1	12357-ZJ4-000	TUBE, BREATHER.....	1	1		
2	15772-551-000	CLIP, BREATHER TUBE.....	1	1		
3	16010-ZG8-000	GASKET SET.....	1	1	-----	QAF, QAF4, QWA, QWA4, QYF, QYF4
	16010-ZJ4-800	1	1	-----	QAE, QWC, QWD
4	16011-GK0-891	VALVE SET, FLOAT.....	1	1		
5	16013-ZV4-005	FLOAT SET.....	1	1		
6	16015-ZJ1-000	CHAMBER SET, FLOAT.....	1	1	-----	QAF, QAF4, QWA, QWA4, QYF, QYF4
	16015-ZJ4-800	1	1	-----	QAE, QWC, QWD
7	16016-ZJ1-010	SCREW SET.....	1	1		
8	16024-124-760	SCREW SET, DRAIN.....	1	1		
9	16028-ZG8-000	SCREW SET.....	1	1		
10	16081-ZV4-650	SCREW-WASHER.....	4	4		
11	16100-ZJ4-010	CARBURETOR ASSY. (BG23A B)....	1	-	-----	QAF, QWA, QWA4, QYF, QYF4
	16100-ZJ4-801	CARBURETOR ASSY. (BG24A B)....	1	-	-----	QWC, QWD
	16100-ZJ4-811	CARBURETOR ASSY. (BG25A B)....	1	-	-----	QAE
*	16100-ZJ6-010	CARBURETOR ASSY. (BG26A B)....	-	1	-----	QAF, QAF4, QWA, QYF, QYF4
*	16100-ZJ6-801	CARBURETOR ASSY. (BG27A B)....	-	1	-----	QWC, QWD
*	16100-ZJ6-811	CARBURETOR ASSY. (BG28A B)....	-	1	-----	QAE
12	16148-141-881	CAP, CHOKE DUST.....	1	1		
13	16150-ZJ4-000	JET SET, #48.....	1	-		
*	16150-ZJ6-010	JET SET, #45.....	-	1		
14	16166-ZJ4-000	NOZZLE, MAIN.....	1	-		
*	16166-ZJ6-010	-	1		
15	16178-548-004	O-RING, 5.8X1.9.....	1	1	-----	QAF, QAF4, QWA, QWA4, QYF, QYF4
16	16200-ZJ1-003	VALVE ASSY., SOLENOID.....	1	1	-----	QAF, QAF4, QWA, QWA4, QYF, QYF4
17	16211-ZJ1-000	INSULATOR, CARBURETOR.....	1	1		

Ref. No.	Part No.	Description	Reqd. No.		Serial No.	Type
			GXV \$10	GXV \$20		
18	16221-ZG8-000	PACKING, CARBURETOR.....	2	2		
19	17228-ZG8-003	PACKING, AIR CLEANER.....	1	1		
20	17237-ZE3-791	COLLAR A, AIR CLEANER.....	2	2		
21	17410-ZJ4-000	ELBOW COMP., AIR CLEANER.....	1	1		
22	90041-147-000	BOLT, STUD, 6X108.....	2	2		
23	90658-SA0-003	CLIP, WIRE HARNESS.....	1	1		
24	93892-05012-18	SCREW-WASHER, 5X12.....	2	2	-----	QAF,QAF4,QWA,QWA4,QYF,QYF4
25	94050-06000	NUT, FLANGE, 6MM.....	2	2		
26	95002-02080	CLIP, TUBE (B8).....	1	1		
* 27	95005-35600-20	TUBE, 3.5X600 (95005-35001-20M)	1	1		
28	95005-45450-20	TUBE, 4.5X450 (95005-45001-20M)	1	1		
29	99101-ZJ4-0900	JET, MAIN, #90.....	(1)	-	-----	QAE,QWC,QWD
	99101-ZJ4-0920	JET SET, #92.....	(1)	-	-----	QAE,QWC,QWD
	99101-ZJ4-0950	JET SET, #95.....	1	-	-----	QAE,QWC,QWD
	99201-ZG8-0900	JET, MAIN, #90.....	(1)	-	-----	QAF,QWA,QWA4,QYF,QYF4
	99201-ZG8-0920	JET, MAIN, #92.....	(1)	-	-----	QAF,QWA,QWA4,QYF,QYF4
	99201-ZG8-0950	JET, MAIN, #95.....	1	-	-----	QAF,QWA,QWA4,QYF,QYF4
* 99101-ZJ4-1050	JET, MAIN, #105.....		-	(1)	-----	QAE,QWC,QWD
	99101-ZJ4-1080	JET, MAIN, #108.....	-	(1)	-----	QAE,QWC,QWD
	99101-ZJ4-1100	JET, MAIN, #110.....	-	1	-----	QAE,QWC,QWD
* 99201-ZG8-1050	JET SET, MAIN, #105.....		-	(1)	-----	QAF,QAF4,QWA,QYF,QYF4
	99201-ZG8-1080	JET SET, MAIN, #108.....	-	(1)	-----	QAF,QAF4,QWA,QYF,QYF4
	99201-ZG8-1100	JET SET, MAIN, #110.....	-	1	-----	QAF,QAF4,QWA,QYF,QYF4



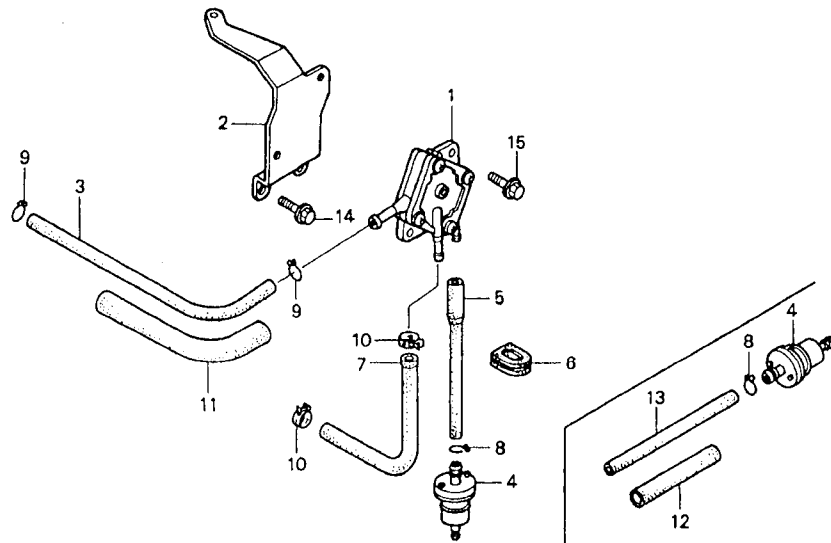


ZJ43-E1500

Service Item F.R.T.

ELEMENT, AIR CLEANER.....	0.2
.PACKING A, ELEMENT	
.PACKING B, ELEMENT	
.CASE COMP., AIR CLEANER	
.TUBE, AIR CLEANER CONNECTING	
FILTER, OUTER.....	0.1
.COVER, AIR CLEANER	
HOSE, AIR CLEANER.....	0.4

Ref. No.	Part No.	Description	Reqd. No.		Serial No.	Type
			GXV 610	GXV 620		
1	17211-ZJ1-000	ELEMENT, AIR CLEANER.....	1	1		
2	17216-ZJ1-000	PACKING A, ELEMENT.....	1	1		
3	17217-ZJ1-000	PACKING B, ELEMENT.....	1	1		
4	17218-ZJ1-000	FILTER, OUTER.....	1	1		
5	17220-ZJ1-000	CASE COMP., AIR CLEANER.....	1	1		
6	17231-ZJ1-000	COVER, AIR CLEANER.....	1	1		
7	17232-ZJ1-000	GROMMET, AIR CLEANER.....	1	1		
8	17237-ZJ1-000	HOSE, AIR CLEANER.....	1	1		
9	17251-ZJ4-000	TUBE, AIR CLEANER CONNECTING..	1	1		
10	17255-758-000	BAND, AIR CLEANER CONNECTING TUBE	1	1		
11	17257-HB3-000	BAND B, AIR CLEANER.....	1	1		
12	90017-ZJ1-000	BOLT, AIR CLEANER.....	1	1		
13	90018-ZE1-000	BOLT, FLANGE, 6X23.....	3	3		
14	90120-102-000	COLLAR, AIR CLEANER CASE.....	4	4		
15	93500-04020-0A	SCREW, PAN, 4X20.....	1	1		
16	93891-05016-08	SCREW-WASHER, 5X16.....	2	2		
17	95701-06018-00	BOLT, FLANGE, 6X18.....	1	1		



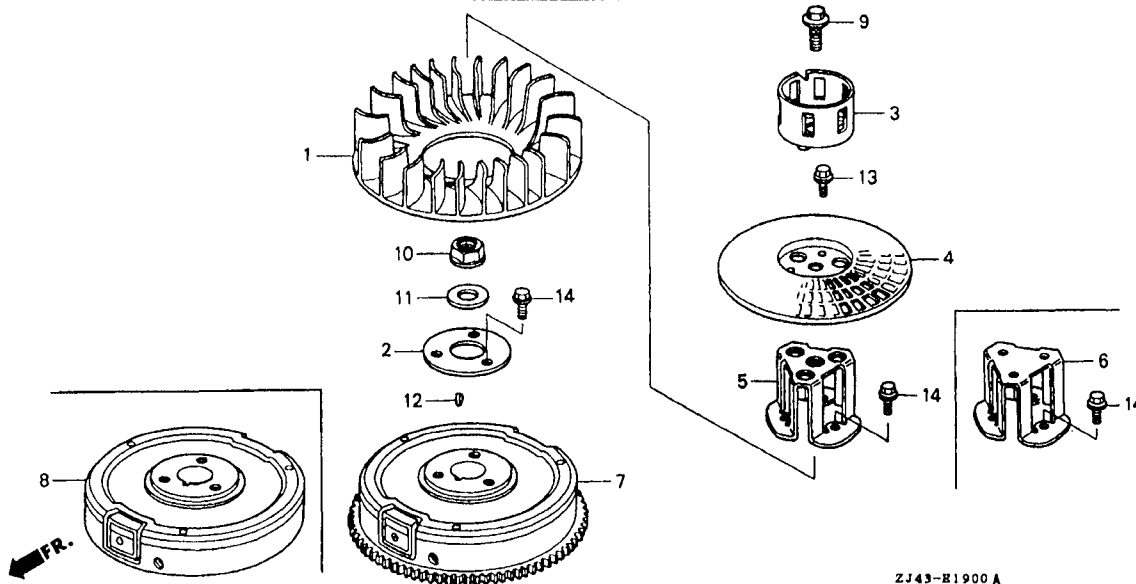
ZJ43-E1800 A

ZJHE1111A

Service Item F.R.T.

PUMP ASSY., FUEL.....	0.2
.STAY, FUEL PUMP	
.STRAINER COMP., FUEL	
.TUBE, FUEL, 5.3X205	
.TUBE, VINYL, 11X13X160	
TUBE, FUEL.....	0.5
TUBE, FUEL.....	0.1

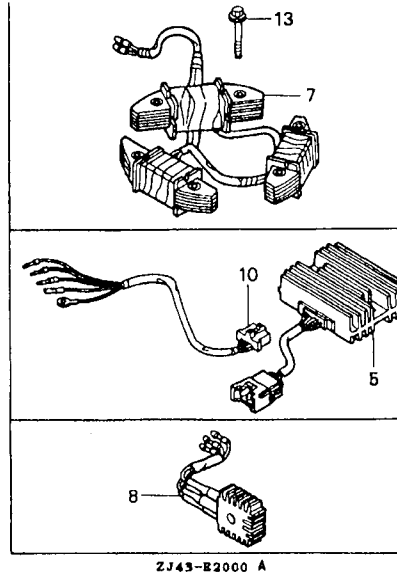
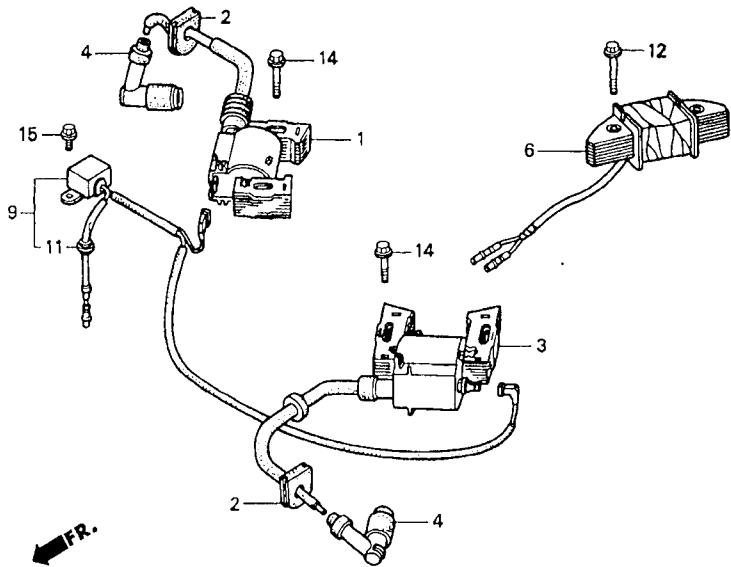
Ref. No.	Part No.	Description	Reqd. No.		Serial No.	Type
			GXV 610	GXV 620		
1	16700-ZJ1-003	PUMP ASSY., FUEL.....	1	1	-----	QAE,QAF,QAF4,QWA,QWA4,QYF,QYF4
2	16711-ZJ4-000ZB	STAY, FUEL PUMP	1	1	-----	QAE,QAF,QAF4,QWA,QWA4,QYF,QYF4
		R8.....BRIGHT RED	1	1	-----	QAF4,QWA4,QYF4
*	16711-ZJ4-000ZC	*NH1*.....BLACK	1	1	-----	QAE,QAF,QAF4,QWA,QWA4,QYF,QYF4
3	16851-ZJ4-000	TUBE, FUEL.....	1	1	-----	QAE,QAF,QAF4,QWA,QWA4,QYF,QYF4
4	16910-ZE8-015	STRAINER COMP., FUEL.....	1	1	-----	QAE,QAF,QWA,QYF
5	17513-ZC3-000	TUBE, FUEL.....	1	1	1000711	QAE,QAF,QWA,QYF
*	16852-ZJ4-000	TUBE B, FUEL.....	1	1	1000712	QAE,QAF,QWA,QYF
			1	1	-----	QAF4,QWA4,QYF4
6	19905-ZA8-701	GROMMET, CORD.....	1	1	-----	
7	95001-55205-40	TUBE, FUEL, 5.3X205	1	1	-----	QAE,QAF,QAF4,QWA,QWA4,QYF,QYF4
		(95001-55001-60M)	1	1	-----	QAE,QAF,QAF4,QWA,QWA4,QYF,QYF4
8	95002-02080	CLIP, TUBE (B8).....	1	1	-----	
9	95002-02100	CLIP, TUBE (B10).....	2	2	-----	QAE,QAF,QAF4,QWA,QWA4,QYF,QYF4
10	95002-41050-08	CLAMP, TUBE (D10.5).....	2	2	-----	QAE,QAF,QAF4,QWA,QWA4,QYF,QYF4
11	95003-36016-20	TUBE, VINYL, 11X13X160	1	1	-----	QAE,QAF,QAF4,QWA,QWA4,QYF,QYF4
		(95003-36001-10M)	1	1	-----	QAE,QAF,QAF4,QWA,QWA4,QYF,QYF4
12	95003-36030-20	TUBE, VINYL, 11X13X300	1	1	-----	QWC,QWD
		(95003-36001-10M)	1	1	-----	QWC,QWD
13	95005-45350-20	TUBE, 4.5X350	1	1	-----	QWC,QWD
		(95005-45001-20M)	1	1	-----	QWC,QWD
14	95701-06008-00	BOLT, FLANGE, 6X8.....	2	2	-----	QAE,QAF,QAF4,QWA,QWA4,QYF,QYF4
15	95701-06014-00	BOLT, FLANGE, 6X14.....	2	2	-----	QAE,QAF,QAF4,QWA,QWA4,QYF,QYF4



Service Item	F.R.T.
FAN, COOLING.....	0.5
.SPACER, STARTER PULLEY MOUNTING	
.HOLDER, SCREEN GRID PULLEY, STARTER.....	0.4
.GRID, SCREEN FLYWHEEL COMP.....	0.7

Ref. No.	Part No.	Description	Reqd. No.		Serial No.	Type
			GXV 610	GXV 620		
1	19511-ZJ1-000	FAN, COOLING.....	1	1		
2	19513-ZJ1-000	PLATE, COOLING FAN SETTING...	1	1	-----	QAE,QAF,QAF4
3	28451-ZJ1-801	PULLEY, STARTER.....	1	1	-----	QWA,QWA4,QWC,QWD
4	28452-ZJ1-801	GRID, SCREEN.....	1	1	-----	QWA,QWA4,QWC,QWD,QYF,QYF4
5	28453-ZJ1-801	SPACER, STARTER PULLEY MOUNTING	1	1	-----	QWA,QWA4,QWC,QWD
6	28454-ZJ1-801	HOLDER, SCREEN GRID.....	1	1	-----	QYF,QYF4
7	31110-ZJ1-800	FLYWHEEL COMP.....	1	1	-----	QAF,QAF4,QYF,QYF4
	31110-ZJ1-810	1	1	-----	QAE,QWA,QWA4,QWC
8	31110-ZJ4-000	FLYWHEEL COMP.....	1	1	-----	QWD
9	90013-ZJ1-800	BOLT, UBS, 12X28.....	1	1	-----	QWA,QWA4,QWC,QWD
10	90201-ZG3-000	NUT, FLANGE, 20MM.....	1	1		
11	90401-ZG3-000	WASHER, 20MM.....	1	1		
12	90741-ZE2-000	KEY, SPECIAL WOODRUFF, 25X18..	1	1		
13	95701-06012-00	BOLT, FLANGE, 6X12.....	3	3	-----	QYF,QYF4
14	95701-08016-00	BOLT, FLANGE, 8X16.....	3	3		

2



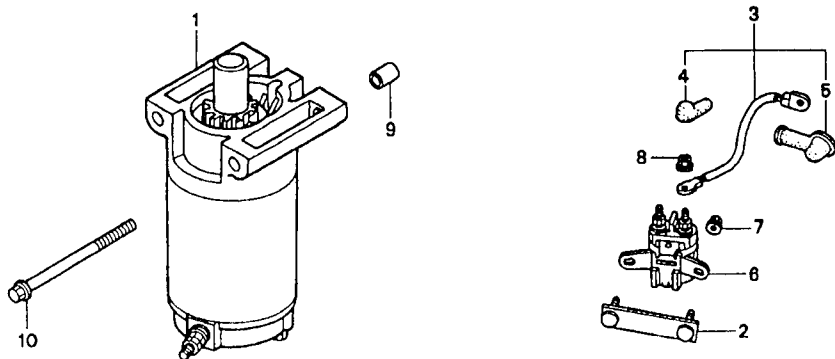
Service Item	F.R.T.
COIL ASSY., R. IGNITION.....	0.5
.COIL ASSY., L. IGNITION	
CAP ASSY., NOISE SUPPRESSOR....	0.1
RECTIFIER ASSY., REGULATOR.....	0.2
.RECTIFIER ASSY.	
.HARNES ASSY., SUB WIRE	
COIL ASSY., CHARGE.....	0.8
DIODE ASSY., ENGINE STOP.....	0.6

Ref. No.	Part No.	Description	Reqd. No.		Serial No.	Type
			GXV 610	GXV 620		
1	30500-ZJ1-003	COIL ASSY., R. IGNITION.....	1	1	-----	QAE, QAF, QWA, QWC, QWD, QYF
*	30500-ZJ1-013	1	1	-----	QAF4, QWA4, QYF4
2	30518-ZJ1-000	GROMMET, HIGH TENSION CORD....	2	2	-----	
3	30550-ZJ1-003	COIL ASSY., L. IGNITION.....	1	1	-----	QAE, QAF, QWA, QWC, QWD, QYF
*	30550-ZJ1-013	1	1	-----	QAF4, QWA4, QYF4
4	30700-ZJ1-003	CAP ASSY., NOISE SUPPRESSOR...	2	2	-----	
5	31620-ZG5-003	RECTIFIER ASSY., REGULATOR (20A)	1	1	-----	QAF, QAF4, QYF, QYF4
6	31630-ZJ1-003	COIL ASSY., CHARGE (12V/3A)...	1	1	-----	QAE, QWA, QWA4, QWC
7	31630-ZJ1-801	COIL ASSY., CHARGE (12V/20A)..	1	1	-----	QAF, QAF4, QYF, QYF4
8	31710-ZJ1-811	RECTIFIER ASSY.....	1	1	-----	QAE, QWA, QWA4, QWC
9	31740-ZJ1-003	DIODE ASSY., ENGINE STOP.....	1	1	-----	
* 10	32105-ZJ1-800	HARNES ASSY., SUB WIRE.....	1	1	-----	QAF4, QYF4
11	63312-ZA7-000	GROMMET, TOOL.....	1	1	-----	
12	90014-ZE6-000	BOLT, FLANGE, 6X35.....	2	2	-----	QAE, QWA, QWA4, QWC
13	90031-ZE1-000	BOLT, FLANGE, 6X32.....	6	6	-----	QAF, QAF4, QYF, QYF4
14	90121-952-000	BOLT, FLANGE, 6X25.....	2	2	-----	
15	95701-06008-00	BOLT, FLANGE, 6X8.....	1	1	-----	

D 2

Starter motor

E - 21

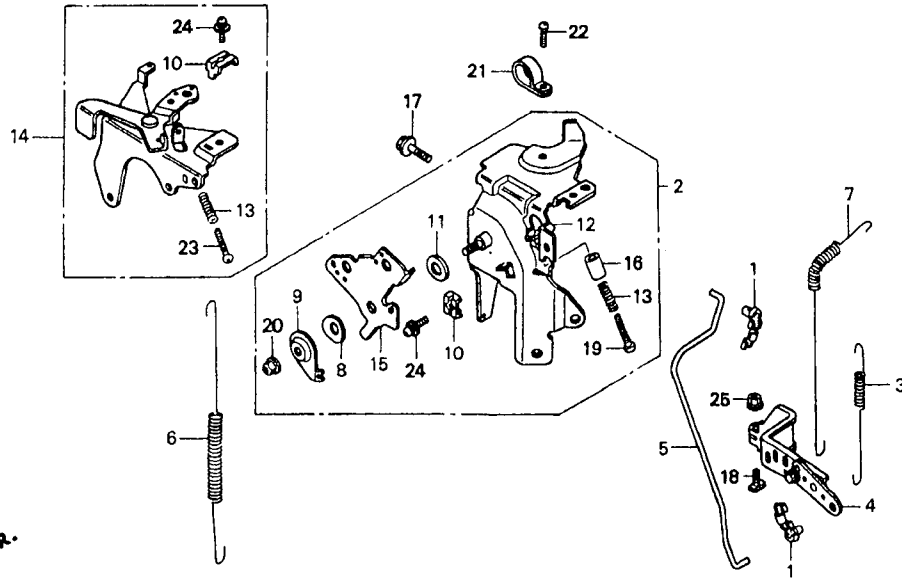


ZJ43-E2100 A

Service Item F.R.T.

MOTOR ASSY., STARTER.....	0.3
CORD, MAGNET SWITCH.....	0.2
SWITCH ASSY., STARTER MAGNETIC	

Ref. No.	Part No.	Description	Reqd. No.		Serial No.	Type
			GXV 610	GXV 620		
1	31200-ZJ4-003	MOTOR ASSY., STARTER.....	1	1	-----	QAE,QAF,QAF4,QWA,QWA4,QWC,QYF,QYF4
2	31243-ZJ1-800	BRACKET, STARTER MAGNETIC SETTING	(1)	(1)	-----	QAE,QAF,QAF4,QWA,QWA4,QWC,QYF,QYF4
3	32402-ZJ1-810	CORD, MAGNET SWITCH.....	(1)	(1)	-----	QAE,QAF,QAF4,QWA,QWA4,QWC,QYF,QYF4
4	32411-KB9-930	COVER A, MAGNETIC SWITCH.....	(1)	(1)	-----	QAE,QAF,QAF4,QWA,QWA4,QWC,QYF,QYF4
5	32411-402-000	COVER, STARTING MOTOR TERMINAL	(1)	(1)	-----	QAE,QAF,QAF4,QWA,QWA4,QWC,QYF,QYF4
6	35850-ZJ1-811	SWITCH ASSY., STARTER MAGNETIC	(1)	(1)	-----	QAE,QAF,QAF4,QWA,QWA4,QWC,QYF,QYF4
7	94050-06000	NUT, FLANGE, 6MM.....	(2)	(2)	-----	QAE,QAF,QAF4,QWA,QWA4,QWC,QYF,QYF4
8	94070-06080	NUT-WASHER, 6MM.....	(2)	(2)	-----	QAE,QAF,QAF4,QWA,QWA4,QWC,QYF,QYF4
9	94301-10120	PIN, DOWEL, 10X12.....	2	2	-----	QAE,QAF,QAF4,QWA,QWA4,QWC,QYF,QYF4
10	95701-08110-00	BOLT, FLANGE, 8X110.....	2	2	-----	QAE,QAF,QAF4,QWA,QWA4,QWC,QYF,QYF4



ZJ43-82200 A

ZJ431111

Service Item	F.R.T.
JOINT, ROD.....	0.2
.SPRING, STARTER	
.SPRING, GOVERNOR	
.SPRING, THROTTLE RETURN	
.LEVER, WIRE	
CONTROL ASSY.....	0.4
.STAY ASSY., CHOKE CONTROL	
ARM COMP., GOVERNOR.....	0.3
.ROD, GOVERNOR	
BASE COMP., CONTROL.....	0.5

Ref. No.	Part No.	Description	Reqd. No.		Serial No.	Type
			GXV 610	GXV 620		
	1	16263-ZJ4-003	2	2		
	2	16500-ZJ4-810	1	1	-----	QAE,QAF,QWA,QWC,QWD,QYF
*		16500-ZJ4-820	1	1	-----	QAF4,QWA4,QYF4
	3	16534-ZJ1-000	1	1		
	4	16550-ZJ4-000	1	1		
	5	16555-ZJ4-000	1	1		
	6	16561-ZJ1-000	1	1		
	7	16562-ZJ4-000	1	1		
	8	16574-ZE1-000	1	1		
	9	16575-ZH8-000	1	1		
	10	16576-891-000	2	2		
	11	16578-ZE1-000	1	1		
	12	16580-ZJ4-000	1	1		
	13	16584-883-300	2	2		
	14	16590-ZJ4-810	1	1		
	15	16596-ZJ1-000	1	1		
*	16	16599-ZG1-M10	1	1	-----	QAF4,QWA4,QYF4
*	17	90013-883-000	2	2		
	18	90015-ZE3-790	1	1		
*	19	90016-ZG9-N30	1	1	-----	QAF4,QWA4,QYF4
		93500-05025-OH	1	1	-----	QAE,QAF,QWA,QWC,QWD,QYF
	20	90114-SAO-000	1	1		
	21	90612-ZJ4-000	1	1		
	22	93500-05012-0A	1	1		

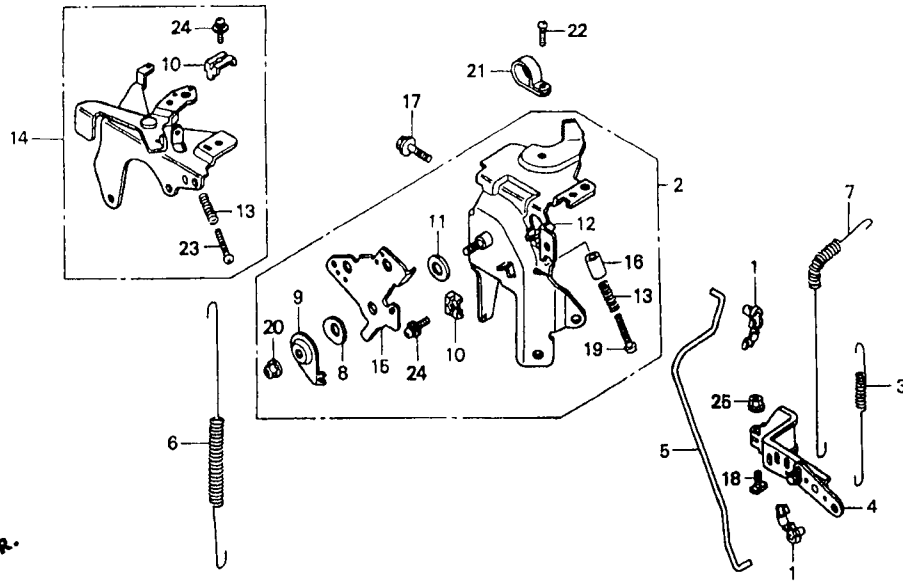


D 4

Control

E - 22

Service Item F.R.T.

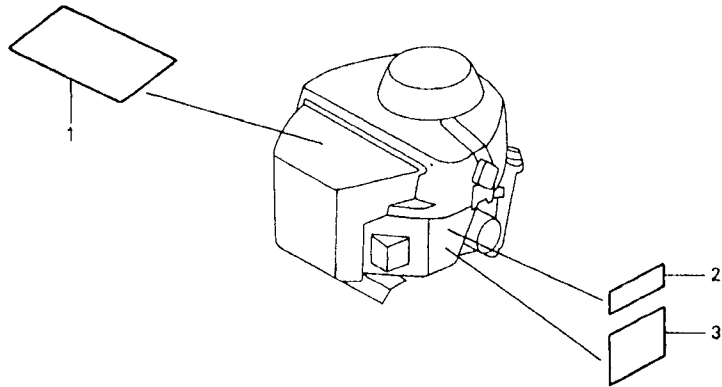


ZJ43-B2200A ZULIEFUNG

Ref. No.	Part No.	Description	Reqd. No.		Serial No.	Type
			GXV 110	GXV 120		
23	93500-05025-0H	SCREW, PAN, 5X25.....	1	1		
24	93893-05016-00	SCREW-WASHER, 5X16.....	2	2		
25	94050-06000	NUT, FLANGE, 6MM.....	1	1		

2

Service Item F.R.T.

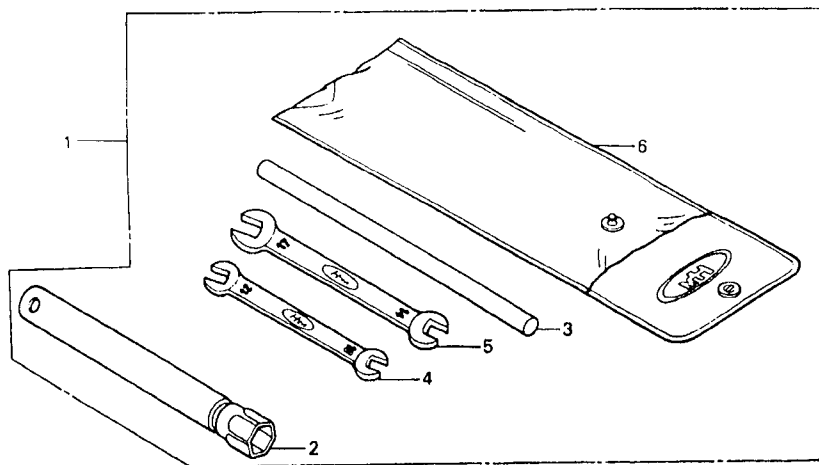


ZJ43-B2800

ZJ43B

Ref. No.	Part No.	Description	Reqd. No.		Serial No.	Type
			GXV 610	GXV 620		
1	87101-ZJ4-000	MARK, EMBLEM (GXV610).....	1	-		
	87101-ZJ6-000	MARK, EMBLEM (GXV620).....	-	1		
2	87152-ZJ4-000	LABEL, SPECIFICATION (GXV610).	1	-		
	87152-ZJ6-000	LABEL, SPECIFICATION (GXV620).	-	1		
3	87522-ZJ1-000	LABEL, CAUTION.....	1	1	-----	QAE, QAF, QWA, QWC, QWD, QYF
*	87522-ZH8-W40	MARK, CAUTION.....	1	1	-----	QAF4, QWA4, QYF4





ZJ45-E2900

Service Item F.R.T.

Ref. No.	Part No.	Description	Reqd. No.		Serial No.	Type
			GXV 610	GXV 620		
1	89000-ZE1-000	TOOL KIT.....	(1)	(1)		
2	89218-ZE1-000	WRENCH COMP., SPARK PLUG.....	(1)	(1)		
3	89219-805-000	HANDLE, BOX WRENCH.....	(1)	(1)		
4	99001-10120	SPANNER, 10X12.....	(1)	(1)		
5	99001-14170	SPANNER, 14X17.....	(1)	(1)		
6	99008-02300	BAG, TOOL, 230MM.....	(1)	(1)		

D 7

Gasket kit

EOP - 1

Service Item F.R.T.

Ref. No.	Part No.	Description	Reqd. No.		Serial No.	Type
			GXV 610	GXV 620		
*	061A1-ZJ4-000	GASKET KIT..... (COMPONENT PARTS)	1	1	-----	QAE, QAF, QWA, QWC, QWD, QYF
* 1	11381-ZJ1-000	PACKING, CASE COVER.....	1	1	-----	QAE, QAF, QWA, QWC, QWD, QYF
* 2	12251-ZJ1-003	GASKET, CYLINDER HEAD.....	2	2	-----	QAE, QAF, QWA, QWC, QWD, QYF
* 3	12358-ZJ1-000	PACKING, BREATHER COVER.....	1	1	-----	QAE, QAF, QWA, QWC, QWD, QYF
* 4	12391-ZJ1-000	PACKING, HEAD COVER.....	2	2	-----	QAE, QAF, QWA, QWC, QWD, QYF
* 5	15339-ZJ4-000	O-RING, OIL PLATE.....	1	1	-----	QAE, QAF, QWA, QWC, QWD, QYF
* 6	16221-ZG8-000	PACKING, CARBURETOR.....	2	2	-----	QAE, QAF, QWA, QWC, QWD, QYF
* 7	17151-ZJ1-003	GASKET, IN. MANIFOLD.....	2	2	-----	QAE, QAF, QWA, QWC, QWD, QYF
* 8	17228-ZG8-003	PACKING, AIR CLEANER.....	1	1	-----	QAE, QAF, QWA, QWC, QWD, QYF
* 9	18333-ZJ1-000	GASKET, EX. PIPE.....	2	2	-----	QAE, QAF, QWA, QWC, QWD, QYF
* 10	91301-ZE9-003	O-RING, 22.5X2.2.....	1	1	-----	QAE, QAF, QWA, QWC, QWD, QYF
* 11	91302-MB6-830	O-RING, 13X3.0.....	2	2	-----	QAE, QAF, QWA, QWC, QWD, QYF

2

Address Page			Address Page			Address Page			Address Page			Address Page			Address Page		
Part No.	No.	No.	Part No.	No.	No.	Part No.	No.	No.	Part No.	No.	No.	Part No.	No.	No.	Part No.	No.	No.
06000			13321-ZJ1-000	C2	10	16013-ZV4-005	C12	20	17000			28441-ZE2-W01	C9	17	63000		
			13322-ZJ1-000	C2	10	16015-ZJ1-000	C12	20				28442-ZE2-W01	C9	17			
061A1-ZJ4-000	D7	31	13323-ZJ1-000	C2	10	16015-ZJ4-800	C12	20	17101-ZJ4-000	C1	9	28443-ZE2-W01	C9	17	63312-ZA7-000	D1	25
						16016-ZJ1-010	C12	20	17151-ZJ1-003	C1	9	28444-ZE2-W01	C9	17			
11000			14000			16024-124-760	C12	20				28445-ZE2-W01	C9	17	80000		
						16028-ZG8-000	C12	20	17211-ZJ1-000	C14	22	28451-ZJ1-801	C16	24			
11300-ZJ4-000	C3	11	14100-ZJ1-801	C7	15	16081-ZV4-650	C12	20	17216-ZJ1-000	C14	22	28452-ZJ1-801	C16	24	80115-KS5-000	C10	18
11381-ZJ1-000	C3	11	14110-ZJ1-801	C7	15	16100-ZJ4-010	C12	20	17217-ZJ1-000	C14	22	28453-ZJ1-801	C16	24			
			14410-ZJ1-000	C7	15	16100-ZJ4-801	C12	20	17218-ZJ1-000	C14	22	28454-ZJ1-801	C16	24	87000		
			14431-ZJ1-000	C7	15	16100-ZJ4-811	C12	20	17220-ZJ1-000	C14	22	28461-ZE2-W01	C9	17			
			14441-ZE2-000	C7	15	16100-ZJ6-010	C12	20	17228-ZG8-003	C13	21	28462-ZE3-W01	C9	17	87101-ZJ4-000	D5	29
			14461-ZJ4-000	C7	15	16100-ZJ6-801	C12	20				28469-ZE2-W01	C9	17	87101-ZJ6-000	D5	29
120A0-ZJ1-000	C2	10	14568-ZJ1-800	C7	15	16100-ZJ6-811	C12	20	17231-ZJ1-000	C14	22			87152-ZJ4-000	D5	29	
120A0-ZJ1-820	C2	10	14569-ZJ1-801	C7	15	16148-141-881	C12	20	17232-ZJ1-000	C14	22	30000		87152-ZJ6-000	D5	29	
12000-ZJ4-000	C2	10	14576-ZJ1-800	C7	15	16150-ZJ4-000	C12	20	17237-ZE3-791	C13	21			87522-ZJ6-000	D5	29	
12205-ZE2-305	C1	9	14576-ZJ1-801	C7	15	16150-ZJ6-010	C12	20	17237-ZJ1-000	C14	22	30500-ZJ1-003	D1	25	87522-ZH8-W40	D5	29
12209-ZE8-003	C7	15	14577-ZJ1-800	C7	15	16166-ZJ4-000	C12	20	17240-ZE6-000	C3	11	30500-ZJ1-013	D1	25			
12210-ZJ4-000	C1	9	14577-ZJ1-801	C7	15	16166-ZJ6-010	C12	20	17251-ZJ4-000	C14	22	30518-ZJ1-000	D1	25	89000		
12216-ZE2-300	C1	9	14578-ZJ1-800	C7	15	16178-548-004	C12	20	17255-ZE8-000	C14	22	30550-ZJ1-003	D1	25			
12220-ZJ4-000	C1	9	14578-ZJ1-801	C7	15	16200-ZJ1-003	C12	20	17257-HB3-000	C14	22	30550-ZJ1-013	D1	25	89000-ZE1-000	D6	30
12251-ZJ1-003	C1	9	14579-ZJ1-800	C7	15	16211-ZJ1-000	C12	20	17410-ZJ4-000	C13	21	30588-898-000	C10	18	89218-ZE1-000	D6	30
			14579-ZJ1-801	C7	15	16221-ZG8-000	C13	21	17513-ZC3-000	C15	23	30700-ZJ1-003	D1	25	89219-805-000	D6	30
12311-ZJ1-000	C1	9	14580-ZJ1-800	C7	15												
12356-ZJ1-000	C2	10	14580-ZJ1-801	C7	15	16263-ZJ4-003	D3	27	18000			31000			90000		
12357-ZJ4-000	C12	20	14581-ZJ1-801	C7	15	16500-ZJ4-810	D3	27									
12358-ZJ1-000	C2	10	14586-ZJ1-800	C7	15	16500-ZJ4-820	D3	27	18205-ZJ4-000	C10	18	31110-ZJ1-800	C16	24	90002-ZG5-004	C3	11
			14711-ZJ1-000	C7	15	16512-ZJ1-000	C8	16	18333-ZJ1-000	C1	9	31110-ZJ1-810	C16	24	90004-ZE2-W01	C9	17
12372-ZE2-300	C2	10	14721-ZJ1-000	C7	15	16522-ZJ1-000	C8	16				31110-ZJ4-000	C16	24	90012-415-000	C8	16
12391-ZJ1-000	C1	9	14751-ZE2-003	C7	15	16523-ZJ1-000	C8	16				31200-ZJ4-003	D2	26	90013-ZJ1-800	C16	24
			14771-ZE2-000	C7	15	16524-ZJ1-000	C8	16	19000			31243-ZJ1-800	D2	26	90013-883-000	C10	18
			14775-ZE2-010	C7	15	16529-ZJ1-000	C8	16				31511-ZJ1-000	C2	10			
13000			15000			16531-ZJ1-003	C8	16	19511-ZJ1-000	C16	24	31620-ZG5-003	D1	25	90014-ZE6-000	D1	25
						16534-ZJ1-000	D3	27	19513-ZJ1-000	C16	24	31630-ZJ1-003	D1	25	90015-ZE3-790	D3	27
13010-ZE8-601	C6	14	15120-ZJ1-000	C3	11	16541-ZJ1-000	C3	11	19611-ZJ1-000ZB	C10	18	31630-ZJ1-801	D1	25	90016-ZG9-N30	D3	27
13010-ZE8-602	C6	14	15124-ZJ1-003	C3	11	16542-ZJ1-000	C3	11	19611-ZJ1-000ZC	C10	18	31710-ZJ1-811	D1	25	90017-ZJ1-000	C14	22
13011-ZE8-601	C6	14	15232-ZJ1-000	C3	11	16550-ZJ4-000	D3	27	19611-ZJ1-800ZB	C10	18	31740-ZJ1-003	D1	25	90018-PN3-000	C2	10
13011-ZE8-602	C6	14	15235-ZJ4-000	C3	11	16555-ZJ4-000	D3	27	19611-ZJ1-800ZC	C10	18			90018-ZE1-000	C11	19	
13012-ZE8-601	C6	14	15235-ZJ4-000	C3	11	16561-ZJ1-000	D3	27	19612-ZJ1-000	C10	18	32000			C14	22	
13012-ZE8-602	C6	14	15334-ZJ4-000	C3	11	16562-ZJ4-000	D3	27	19614-ZJ1-000	C10	18			90029-888-000	C2	10	
13013-ZE8-601	C6	14	15335-ZE7-000	C3	11	16574-ZE1-000	D3	27	19615-ZJ1-000	C10	18	32105-ZJ1-800	D1	25	90031-ZE1-000	C2	10
13013-ZE8-602	C6	14	15339-ZJ4-000	C3	11	16575-ZH8-000	D3	27	19617-ZJ4-000	C10	18	32402-ZJ1-810	D2	26			
13101-ZJ1-000	C6	14				16576-891-000	D3	27	19621-ZJ1-801ZA	C10	18	32411-KB9-930	D2	26	90041-147-000	C13	21
13102-ZJ1-000	C6	14	15400-PR3-004	C2	10	16578-ZE1-000	D3	27	19621-ZJ1-801ZB	C10	18	32411-402-000	D2	26	90042-ZJ1-000	C11	19
13103-ZJ1-000	C6	14	15427-ZG8-000	C3	11	16580-ZJ4-000	D3	27	19631-ZJ1-000	C10	18			90055-ZE1-000	C11	19	
13104-ZJ1-000	C6	14	15558-ZJ1-003	C3	11	16584-883-300	D3	27	19632-ZJ4-000	C10	18	33000		90104-GF6-000	C11	19	
13111-ZJ1-000	C6	14	15558-772-010	C3	11	16590-ZJ4-810	D3	27	19905-ZA8-701	C15	23			90113-GE4-000	C11	19	
13210-ZJ1-000	C6	14	15600-ZJ4-000	C3	11	16596-ZJ1-000	D3	27				33713-GC2-000	C10	18	90114-SA0-000	D3	27
13211-ZJ1-003	C6	14	15625-ZE8-000	C3	11	16599-ZG1-M10	D3	27	28000					90120-102-000	C14	22	
13212-ZJ1-003	C6	14	15630-ZE8-000	C3	11	16700-ZJ1-003	C15	23				35000		90121-ZJ1-000	C1	9	
13213-ML0-000	C6	14	15646-ZJ4-000	C3	11	16711-ZJ4-000ZB	C15	23	28400-ZE3-W01ZA	C9	17			90121-952-000	D1	25	
13213-ZJ1-003	C6	14	15772-551-000	C12	20	16711-ZJ4-000ZC	C15	23	28400-ZE3-W01ZB	C9	17	35850-ZJ1-811	D2	26	90201-ZG3-000	C16	24
13214-ZJ1-003	C6	14				16851-ZJ4-000	C15	23	28405-ZJ1-801ZA	C10	18			90206-250-000	C8	16	
13215-KM3-000	C6	14	16000			16852-ZJ4-000	C15	23	28405-ZJ1-801ZB	C10	18	37000		90320-HM5-000	C11	19	
13215-ZJ1-003	C6	14				16910-ZE8-015	C15	23	28410-ZE3-W01ZA	C9	17			90401-ZG3-000	C16	24	
13216-ZJ1-003	C6	14	16010-ZG8-000	C12	20				28410-ZE3-W01ZB	C9	17	37201-ZJ4-000	C3	11	90401-ZJ1-000	C5	13
13217-ZJ1-003	C6	14	16010-ZJ4-800	C12	20				28421-ZE3-W01	C9	17	37240-ZG3-E01	C3	11	90446-357-000	C8	16
13310-ZJ4-000	C5	13	16011-GK0-891	C12	20				28422-ZE2-W01	C9	17			90612-ZJ4-000	D3	27	

Address Page			Address Page			Address Page			Address Page			Address Page		
Part No.	No.	No.	Part No.	No.	No.	Part No.	No.	No.	Part No.	No.	No.	Part No.	No.	No.
90658-SA0-003	C13	21	95003-36030-20	C15	23									
90741-ZE2-000	C16	24	95005-35600-20	C13	21									
90745-ZE2-600	C5	13	95005-45350-20	C15	23									
90855-921-300	C3	11	95005-45450-20	C13	21									
90901-ZJ1-003	C8	16	95701-06008-00	C9	17									
				C11	19									
91000				C15	23									
				D1	25									
91201-ZJ1-003	C2	10	95701-06012-00	C4	12									
	C3	11		C16	24									
91202-HC0-003	C3	11	95701-06014-00	C4	12									
91301-ZE9-003	C4	12		C15	23									
	D7	31	95701-06018-00	C14	22									
91302-MB6-830	C4	12	95701-06028-00	C4	12									
	D7	31	95701-06032-00	C1	9									
			95701-08016-00	C4	12									
92000				C11	19									
				C16	24									
92800-14000	C4	12	95701-08050-00	C4	12									
92800-20000	C4	12	95701-08110-00	D2	26									
92900-08025-0B	C1	9	95701-10075-00	C1	9									
			95701-10130-00	C1	9									
93000														
			96000											
93500-04020-0A	C14	22												
93500-05010-0A	C4	12	96140-60030-10	C2	10									
93500-05012-0A	D3	27	96211-12000	C4	12									
93500-05025-0H	D3	27	96600-06016-00	C4	12									
	D4	28												
93891-05016-08	C14	22	98000											
93892-05012-18	C13	21												
93893-05016-00	D4	28	98079-55846	C1	9									
94000			99000											
94050-06000	C11	19	99001-10120	D6	30									
	C13	21	99001-14170	D6	30									
	D2	26	99008-02300	D6	30									
	D4	28	99101-ZJ4-0900	C13	21									
94050-08000	C1	9	99101-ZJ4-0920	C13	21									
94070-06080	D2	26	99101-ZJ4-0950	C13	21									
94109-14000	C4	12	99101-ZJ4-1050	C13	21									
94109-20000	C4	12	99101-ZJ4-1080	C13	21									
94301-08140	C4	12	99101-ZJ4-1100	C13	21									
94301-10120	D2	26	99201-ZG8-0900	C13	21									
94301-12200	C1	9	99201-ZG8-0920	C13	21									
94510-17000	C8	16	99201-ZG8-0950	C13	21									
94601-18000	C6	14	99201-ZG8-1050	C13	21									
			99201-ZG8-1080	C13	21									
95000			99201-ZG8-1100	C13	21									
95001-55205-40	C15	23												
95002-02080	C13	21												
	C15	23												
95002-02100	C15	23												
95002-41050-08	C15	23												
95003-36016-20	C15	23												

PART NAME INDEX

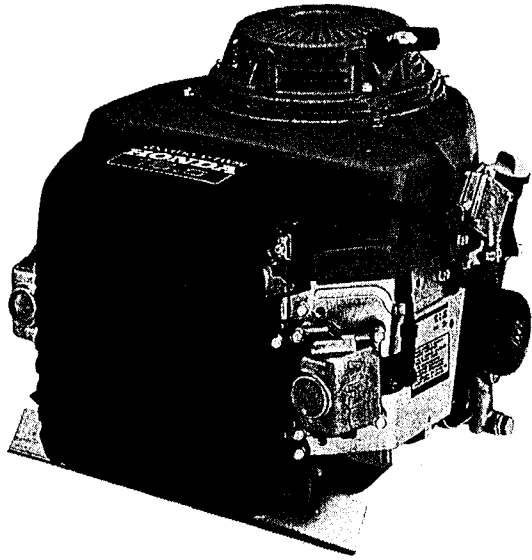
Part name	Address No.	Page No.	Ref. No.	Part name	Address No.	Page No.	Ref. No.	Part name	Address No.	Page No.	Ref. No.
[A]											
ARM COMP., GOVERNOR	D3	27	4	BOLT, FLANGE, 8X110	D2	26	10	COVER, R. SIDE PLATE	C10	18	7
ARM, VALVE ROCKER	C7	15	5	BOLT, FLANGE, 8X16	C4	12	37	COVER, STARTING MOTOR TERMINAL	D2	26	5
					C11	19	24	CRANKSHAFT COMP.	C5	13	1
					C16	24	14				
[B]								[D]			
BAG, TOOL, 230MM	D6	30	6	BOLT, FLANGE, 8X50	C4	12	38	DIODE ASSY., ENGINE STOP	D1	25	9
BALL, STEEL, #12	C4	12	39	BOLT, GOVERNOR ARM	D3	27	18				
BALL, STEEL, 18	C8	16	27	BOLT, SOCKET, 6X16	C4	12	40				
BAND B, AIR CLEANER	C14	22	11	BOLT, STUD, 6X108	C13	21	22				
BAND, AIR CLEANER CONNECTING TUBE	C14	22	10	BOLT, STUD, 6X75	C11	19	17				
BARREL ASSY., CYLINDER	C2	10	1	BOLT, UBS, 12X28	C16	24	9				
BASE COMP., CONTROL	D3	27	12	BRACKET, STARTER MAGNETIC SETTING	D2	26	2				
BEARING A, CONNECTING ROD	C6	14	5	[C]							
BEARING A, MAIN	C2	10	5	CAMSHAFT ASSY.	C7	15	2				
BEARING B, CONNECTING ROD	C6	14	5	CAMSHAFT COMP.	C7	15	3				
BEARING B, MAIN	C2	10	5	CAP ASSY., NOISE SUPPRESSOR	D1	25	4	[F]			
BEARING C, CONNECTING ROD	C6	14	5	CAP ASSY., OIL FILLER	C3	11	13	FAN, COOLING	C16	24	1
BEARING C, MAIN	C2	10	5	CAP, CHOKE DUST	C12	20	12	FILTER, OUTER	C14	22	4
BEARING D, CONNECTING ROD	C6	14	5	CARBURETOR ASSY.	C12	20	11	FLOAT SET	C12	20	5
BEARING E, CONNECTING ROD	C6	14	5	CARTRIDGE, OIL FILTER	C2	10	6	FLYWHEEL COMP.	C16	24	7
BEARING F, CONNECTING ROD	C6	14	5	CASE COMP., AIR CLEANER	C14	22	5				
BEARING G, CONNECTING ROD	C6	14	5	CASE COMP., RECOIL STARTER	C9	17	2	FORK, GOVERNOR	C3	11	18
BEARING, RADIAL BALL, 6003	C2	10	12	CHAMBER SET, FLOAT	C12	20	6				
BOLT 2, STUD, 8X25	C1	9	12	CIRCLIP, EXTERNAL, 17MM	C8	16	28				
BOLT, AIR CLEANER	C14	22	12	CLAMP	D3	27	21				
BOLT, CONNECTING ROD	C6	14	6	CLAMP, HIGH TENSION TUBE	C10	18	12	[G]			
BOLT, DRAIN PLUG, 14MM	C4	12	28	CLAMP, TUBE	C15	23	10	GASKET KIT	D7	31	
BOLT, DRAIN PLUG, 20MM	C4	12	29	CLAMPER, CORD	C2	10	7	GASKET SET	C12	20	3
BOLT, FLANGE, 10X130	C1	9	17	CLIP, BREATHER TUBE	C12	20	2	GASKET, CYLINDER HEAD	C1	9	5
BOLT, FLANGE, 10X75	C1	9	16	CLIP, PISTON PIN, 18MM	C6	14	8	GASKET, EX. PIPE	D7	31	2
BOLT, FLANGE, 6MM	C11	19	20	CLIP, TUBE	C13	21	26	GASKET, IN. PIPE	C1	9	10
BOLT, FLANGE, 6X12	C4	12	34					GASKET, IN. MANIFOLD	D7	31	9
BOLT, FLANGE, 6X14	C10	18	15	CLIP, VALVE GUIDE	C1	9	3	GASKET, IN. MANIFOLD	C1	9	9
BOLT, FLANGE, 6X16	C16	24	13	CLIP, WIRE HARNESS	C13	21	23	GRID, SCREEN	D7	31	7
BOLT, FLANGE, 6X18	D3	27	17	COIL ASSY., CHARGE	D1	25	6	GRID, REINFORCEMENT	C16	24	4
BOLT, FLANGE, 6X20	C4	12	35					GRIP, STARTER	C9	17	12
BOLT, FLANGE, 6X23	C15	23	15	COIL ASSY., L. IGNITION	D1	25	3	GRIP, STARTER	C9	17	10
BOLT, FLANGE, 6X25	C2	10	9	COIL ASSY., R. IGNITION	D1	25	1	GROMMET, AIR CLEANER	C14	22	7
BOLT, FLANGE, 6X28	C14	22	17	COLLAR A, AIR CLEANER	C13	21	20	GROMMET, CORD	C15	23	6
BOLT, FLANGE, 6X32	C11	19	19	COLLAR B, TAILLIGHT	C10	18	13	GROMMET, HIGH TENSION CORD	D1	25	2
BOLT, FLANGE, 6X35	C11	19	16	COLLAR, AIR CLEANER CASE	C14	22	14	GROMMET, TOOL	D1	25	11
BOLT, FLANGE, 6X38	C14	22	13	COLLAR, EXTENSION	C3	11	19	GUIDE, EX. VALVE	C1	9	1
BOLT, FLANGE, 6X42	C1	9	11	COLLAR, STOPPER	D3	27	16				
BOLT, FLANGE, 6X48	D1	25	14	CONTROL ASSY.	D3	27	2	[H]			
BOLT, FLANGE, 6X54	C4	12	36	CORD, MAGNET SWITCH	D2	26	3	HANDLE, BOX WRENCH	D6	30	3
BOLT, FLANGE, 6X60	C1	9	15	CORD, OIL PRESSURE SWITCH	C3	11	20	HARNES ASSY., SUB WIRE	D1	25	10
BOLT, FLANGE, 6X66	C2	10	10	COVER A, MAGNETIC SWITCH	D2	26	4	HEAD COMP., CYLINDER	C1	9	2
BOLT, FLANGE, 6X72	D1	25	13	COVER ASSY., OIL PUMP	C3	11	3				
BOLT, FLANGE, 6X78	D1	25	12	COVER, AIR CLEANER	C14	22	6				
BOLT, FLANGE, 6X84	C9	17	14	COVER, BREATHER	C2	10	2				
BOLT, FLANGE, 6X90	C11	19	23	COVER, FAN	C10	18	2				
BOLT, FLANGE, 6X96	C15	23	14	COVER, HEAD	C1	9	6				
BOLT, FLANGE, 6X102	D1	25	15					HOLDER, CABLE	D3	27	10
								HOLDER, DECOMPER PIN	C7	15	9
								HOLDER, GOVERNOR WEIGHT	C8	16	18
								HOLDER, OIL FILTER	C2	10	8

PART NAME INDEX

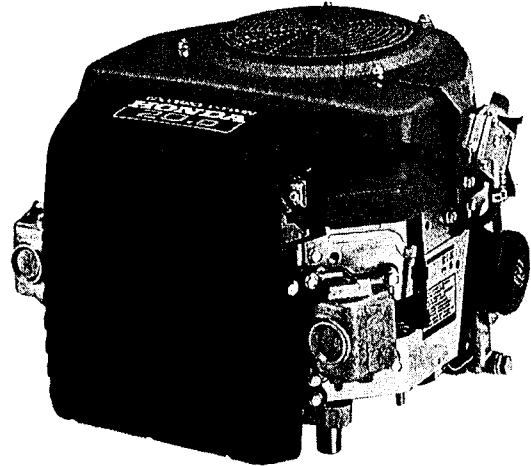
Part name	Address No.	Page No.	Ref. No.	Part name	Address No.	Page No.	Ref. No.	Part name	Address No.	Page No.	Ref. No.
HOLDER, SCREEN GRID	C16	24	6	NUT, FLANGE, 6MM	C11	19	22	PLATE, R. SIDE	C10	18	4
HOLDER, SPRING	C9	17	9		C13	21	25	PLUG, SEALING, 10MM	C3	11	23
HOOD, FAN COVER	C10	18	6		D2	26	7	PLUG, SPARK	C1	9	18
HOSE, AIR CLEANER	C14	22	8		D4	28	25	PROTECTOR COMP., EX. PIPE	C10	18	1
				NUT, FLANGE, 8MM	C1	9	13	PROTECTOR, FAN COVER	C10	18	8
[I]				NUT, SELF-LOCK, 6MM	D3	27	20	PULLEY, RECOIL STARTER	C9	17	3
INSULATOR, CARBURETOR	C12	20	17	NUT, SPRING, 6MM	C11	19	21	PULLEY, STARTER	C16	24	3
				NUT, TAPPET ADJUSTING	C8	16	25	PUMP ASSY., FUEL	C15	23	1
				[O]				[R]			
[J]				O-RING, OIL PLATE	C3	11	9	RATCHET, STARTER	C9	17	4
JET SET, #45	C12	20	13		D7	31	5	RECTIFIER ASSY.	D1	25	8
JET SET, #48	C12	20	13	O-RING, 13X3.0	C4	12	27	RECTIFIER ASSY., REGULATOR	D1	25	5
JET SET, #92	C13	21	29		D7	31	11	RETAINER, IN. VALVE SPRING	C7	15	16
JET SET, #95	C13	21	29	O-RING, 22.5X2.2	C4	12	26	RETAINER, SPRING	C9	17	8
JET SET, MAIN, #105	C13	21	29		D7	31	10	RING SET, PISTON	C6	14	1
JET SET, MAIN, #108	C13	21	29	O-RING, 5.8X1.9	C12	20	15	ROD SET, CONNECTING	C6	14	4
JET SET, MAIN, #110	C13	21	29	OIL SEAL, 10X20X5	C3	11	25	ROD, DECOMPER	C7	15	11
JET, MAIN, #105	C13	21	29	OIL SEAL, 38X58X11	C2	10	11	ROD, GOVERNOR	D3	27	5
JET, MAIN, #108	C13	21	29		C3	11	24	ROD, PUSH	C7	15	4
JET, MAIN, #110	C13	21	29	[P]				ROPE, RECOIL STARTER	C9	17	11
JET, MAIN, #90	C13	21	29	PACKING A, ELEMENT	C14	22	2	ROTOR, OIL PUMP OUTER	C3	11	4
JET, MAIN, #92	C13	21	29	PACKING B, ELEMENT	C14	22	3	RUBBER, BRACKET MOUNTING	C10	18	14
JET, MAIN, #95	C13	21	29	PACKING, AIR CLEANER	C13	21	19	RUBBER, OIL RETURN	C3	11	8
JOINT, ROD	D3	27	1		D7	31	8	[S]			
				PACKING, BREATHER COVER	C2	10	3	SCREEN, OIL FILTER	C3	11	10
[K]					D7	31	3	SCREW SET	C12	20	7
KEY, SPECIAL WOODRUFF, 25X18	C16	24	12	PACKING, CARBURETOR	C13	21	18				
KEY, 6.3X6.3X43	C5	13	3		D7	31	6	SCREW SET, DRAIN	C12	20	8
				PACKING, CASE COVER	C3	11	2	SCREW-WASHER	C12	20	10
[L]					D7	31	1	SCREW-WASHER, 4X8	C3	11	22
LABEL, CAUTION	D5	29	3	PACKING, HEAD COVER	C1	9	7	SCREW-WASHER, 5X12	C13	21	24
LABEL, SPECIFICATION	D5	29	2		D7	31	4	SCREW-WASHER, 5X16	C14	22	16
LEVER, WIRE	D3	27	15	PACKING, OIL FILLER CAP	C3	11	14		D4	28	24
LIFTER, VALVE	C7	15	6	PAN ASSY., OIL	C3	11	1	SCREW, CENTER	C9	17	13
				PIN A, DECOMPER	C7	15	10	SCREW, PAN, 4X20	C14	22	15
[M]				PIN B, DECOMPER	C7	15	10	SCREW, PAN, 5X10	C4	12	30
MANIFOLD, IN.	C1	9	8	PIN C, DECOMPER	C7	15	10	SCREW, PAN, 5X12	D3	27	22
MARK, CAUTION	D5	29	3	PIN D, DECOMPER	C7	15	10	SCREW, PAN, 5X25	D3	27	19
MARK, EMBLEM	D5	29	1	PIN E, DECOMPER	C7	15	10		D4	28	23
MOTOR ASSY., STARTER	D2	26	1	PIN, DOWEL, 10X12	D2	26	9	SCREW, RECESSED, 5X25	D3	27	19
				PIN, DOWEL, 12X20	C1	9	14	SCREW, TAPPET ADJUSTING	C8	16	24
[N]				PIN, DOWEL, 8X14	C4	12	33	SCREW, TAPPING, 4X6	C11	19	18
NOZZLE, MAIN	C12	20	14	PIN, GOVERNOR WEIGHT HOLDER	C8	16	20	SEAL, VALVE STEM	C7	15	1
NUT-WASHER, 6MM	D2	26	8	PIN, PISTON	C6	14	3	SEAT, VALVE SPRING	C7	15	17
NUT, CONNECTING ROD	C6	14	7	PISTON	C6	14	2	SHAFT, GOVERNOR ARM	C3	11	17
NUT, FLANGE, 20MM	C16	24	10	PLATE, COOLING FAN SETTING	C16	24	2	SHAFT, OIL CONTROL	C3	11	6
				PLATE, GOVERNOR WEIGHT HOLDER	C8	16	19	SHAFT, ROCKER ARM	C7	15	7
				PLATE, GOVERNOR BOTTOM	C8	16	21	SHROUD, L.	C10	18	10
				PLATE, GOVERNOR SLIDER	C8	16	22	SHROUD, R.	C10	18	9
				PLATE, L. SIDE	C10	18	5	SLIDER, GOVERNOR	C8	16	23
				PLATE, OIL FILTER	C3	11	7	SPACER, CONTROL LEVER	D3	27	11

PART NAME INDEX

Part name	Address No.	Page No.	Ref. No.	Part name	Address No.	Page No.	Ref. No.	Part name	Address No.	Page No.	Ref. No.
SPACER, RECOIL STARTER				WASHER, CRANKSHAFT THRUST.....	C5	13	2				
MOUNTING	C10	18	11	WASHER, DRAIN PLUG, 14MM.....	C4	12	31				
SPACER, STARTER PULLEY				WASHER, DRAIN PLUG, 20MM.....	C4	12	32				
MOUNTING	C16	24	5	WASHER, THRUST, 17.2MM.....	C8	16	26				
SPANNER, 10X12.....	D6	30	4	WASHER, 20MM.....	C16	24	11				
SPANNER, 14X17.....	D6	30	5	WRENCH COMP., SPARK PLUG.....	D6	30	2				
SPRING, CONTROL ADJUSTING.....	D3	27	13								
SPRING, DECOMPER PIN HOLDER.....	C7	15	12								
SPRING, FRICTION.....	C9	17	5								
SPRING, GOVERNOR.....	D3	27	6								
SPRING, LEVER.....	D3	27	8								
SPRING, RATCHET.....	C9	17	7								
SPRING, RELIEF VALVE.....	C3	11	5								
SPRING, STARTER.....	D3	27	3								
SPRING, STARTER RETURN.....	C9	17	6								
SPRING, THROTTLE RETURN.....	D3	27	7								
SPRING, VALVE.....	C7	15	15								
SPRING, WEIGHT RETURN.....	C7	15	8								
STARTER ASSY., RECOIL.....	C9	17	1								
STAY ASSY., CHOKE CONTROL.....	D3	27	14								
STAY, FUEL PUMP.....	C15	23	2								
STAY, OIL FILLER EXTENSION.....	C3	11	16								
STRAINER COMP., FUEL.....	C15	23	4								
SWITCH ASSY., STARTER MAGNETIC.....	D2	26	6								
SWITCH, OIL PRESSURE.....	C3	11	21								
(T)											
TOOL KIT.....	D6	30	1								
TUBE B, FUEL.....	C15	23	5								
TUBE, AIR CLEANER CONNECTING.....	C14	22	9								
TUBE, BREATHER.....	C12	20	1								
TUBE, FUEL.....	C15	23	3								
			5								
TUBE, FUEL, 5.3X205.....	C15	23	7								
TUBE, VINYL, 11X13X160.....	C15	23	11								
TUBE, VINYL, 11X13X300.....	C15	23	12								
TUBE, 3.5X600.....	C13	21	27								
TUBE, 4.5X350.....	C15	23	13								
TUBE, 4.5X450.....	C13	21	28								
(V)											
VALVE ASSY., SOLENOID.....	C12	20	16								
VALVE SET, FLOAT.....	C12	20	4								
VALVE, BREATHER.....	C2	10	4								
VALVE, EX.....	C7	15	14								
VALVE, IN.....	C7	15	13								
VALVE, OIL SHUT-OFF.....	C3	11	11								
			12								
(W)											
WASHER, CONTROL LEVER.....	D3	27	9								



GXV610



GXV620